



JOHN KING

Conveyor Chains & Sprockets Worldwide

JOHN KING

GROUP COMPANY

Site service Division



Material Processing Solutions Since 1926.



Get in Touch With Us

John King Chains Limited
Lancaster Business Park, Sherburn-in-Elmet, LS25 6NS, UK
ENGLAND

or Call Us by Phone

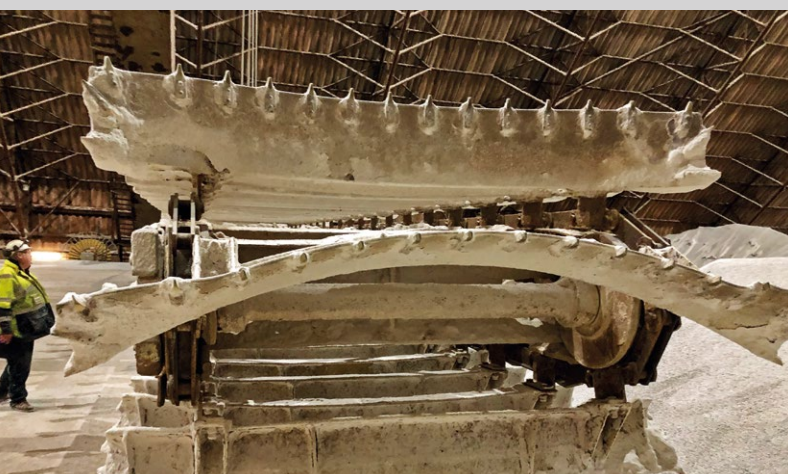
+44 1977 681 910

Why Choose John King Site Service Division.

- **100 Years' materials handling experience,**
- British Standards Institute accredited company **ISO 9001:2015,**
- **Qualified and experienced team of mechanical fitters and fabricators** all committed to best quality and safe working,
- **Fully qualified Internal technical design and product support team,**
- **Supported by full in house manufacturing capabilities including,** chain production, laser and plasma cutting, fabrication, CNC machining and robot welding, ensuring fast response time and reduced cost,
- **Manufacturer branded approved spares available from stock,**
- **Fast Response Times and Competitive Rates,**
- **Safe Contractor approved.**



FM 77342
ISO 9001



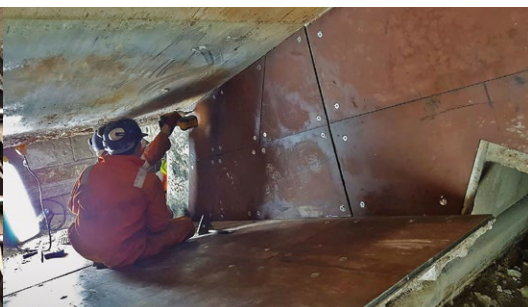
Bulk handling experts you can rely on.

The John King Service Division employ a highly skilled team of Engineers solely dedicated to the **Service & Maintenance of Bulk Material Handling Equipment** which includes – installing, servicing and maintaining; all aspects of mechanical handling equipment.

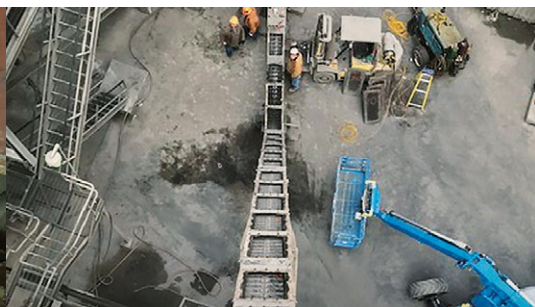
- Chain Conveyors and Bucket Elevators • Reclaimer Conveyors • Plate Feeder and Pan Conveyors • Screw Conveyors • Belt conveyors and Elevators • Push and Walking Floor Systems • Boiler Grates



Preventative maintenance inspection reporting.



Installation.



Service and breakdown support.



Safe delivery.



Machine upgrades.



Spare Parts from stock.

John King offer our customers **the advantage of effective maintenance programs.** In offering a range of quality components a growing number of our customers are taking advantage of the benefits offered by single service provider. **Planned maintenance and service agreements allow for greater equipment availability, increased productivity and reduced operating costs.** We offer Service and Maintenance packages that include and not limited to: **major and minor plant inspections, maintenance repairs and upgrades, installation of new plant and equipment.** Offering our customers a proactive approach to maintenance ensures **fewer breakdowns, service labour and spare parts.** Maintenance can be planned well ahead of critical replacement dates. Operational wear can be attended to in advance of critical failure leading **to reduced downtime and avoidable expense.** **Availability of our team of experienced service Engineers** for fast and effective intervention will prove **to cost effective.** This will release in-house resources to be available for other critical works for other purposes.

Safety at Work.

We are committed to providing and maintaining a healthy and safe environment for all employees and to protect the safety of contractors, customers, visitors and all other persons affected by our operations.

Achieved by assessing all significant risks designing safe systems of work eliminating hazards where reasonably practicable. **Safety for others and ourselves is our primary concern.**

John King Chains Limited

New Climax Works,
Lancaster Business Park,
Sherburn-in-Elmet, LS25 6NS, UK

Tel. +44 1977 681 910

Fax +44 1977 681 899

Email: general@johnkingchains.co.uk

www.johnkingchains.com



Branches.

John King Chains USA Inc.

Birmingham, USA
Tel. +1 205 593 4279

Cadenas John King Ltda.

Concepción, Chile
Tel. +56 41 2214948

John King Chains (SA) (PTY) Ltd.

Boksburg, South Africa
Tel. +27 11 894 3570
Fax +27 11 894 3501

John King Chains Central Europe Sp. z o.o.

Nakło nad Notecią, Poland
Tel. +48 600 871 077

John King Chains Ltd.

Rosario, Argentina
Tel. +54 9 341 214 92 42

John King Chains Ltd Southern Office

Dursley, UK
Tel. +44 1453 543284

