



**JOHN KING**

Conveyor Chains & Sprockets Worldwide

# JOHN KING

GROUP COMPANY



## Material Processing Solutions Since 1926.



**Get in Touch With Us**

John King Chains Limited  
Lancaster Business Park, Sherburn-in-Elmet, LS25 6NS, UK  
ENGLAND

**or Call Us by Phone**

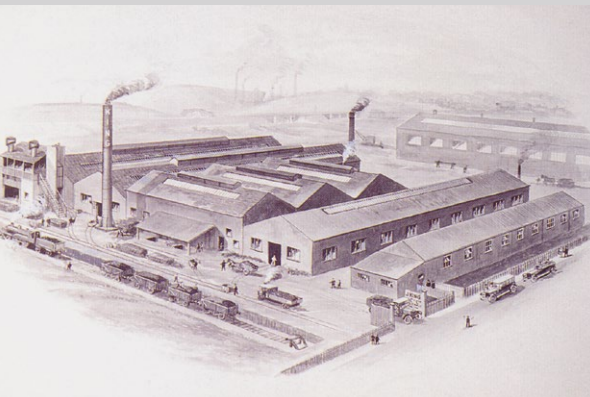
**+44 1977 681 910**

# Why John King should be the first choice partner for your organisation.

- Leading conveyor chain manufacturer **since 1926**,
- British Manufacturing to **the highest quality standards ISO 9001:2015**,
- **Global Business**,
- **Large stock holding** with majority of parts available for immediate dispatch,
- **Complete in-house manufacturing** capabilities including, laser and plasma cutting, fabrication, CNC machining and robot welding,
- In-house **technical design** and **product support team**,
- **Long standing customer service support** and back-up,
- **Site Service capability:** Offering inspections, preventative maintenance and breakdown support,
- All parts supplied with **full manufacturers operational warranty**,
- All material certificated conforming to **BS970 1991** or **direct equivalent**.



FM 77342  
ISO 9001



Climax Works 1930's



Chain Assembly 1960's



John King today

## John King scope of supply

Since 1926 our manufacturing processes have benefited from decades of continuous research, development and improvement. Whether you are designing new equipment, replacing consumables or repairing damaged parts, our team will be able to offer the service and technical support required for optimum chain selection whilst maintaining best commercial advantage.





# Conveyor and Elevator Chains.

Today **JOHN KING** offer the **widest range of conveyor** chains of any manufacturer this making us unique in being able to offer an infinite number of chain types in a variety of materials and constructions for a multiplicity of industrial mechanical handling applications.

As key part of our continuous research examination of process requirements, including optimum materials selection, heat treatment and the implementation of best techniques in production.

**This is because we know that adopting the best quality chain components ensures the highest levels of availability and minimizes the possibility of unscheduled downtime.**

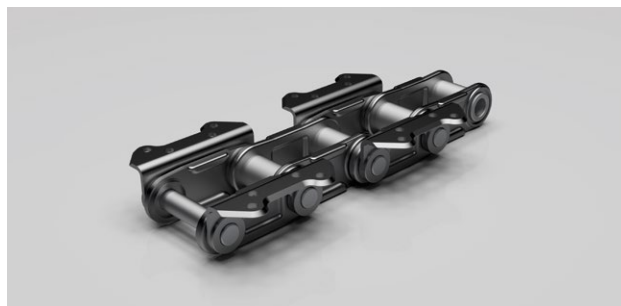
## Forged Chain.



## Welded Chain.



## Elevator Chains.



## BS/ASA Transmission Chains.



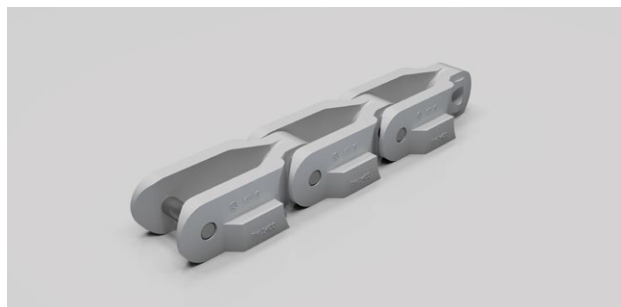
## M/FV Engineering Chains.



## Cast Link Chain.



## Plastic.





## Sprockets and Shafts.

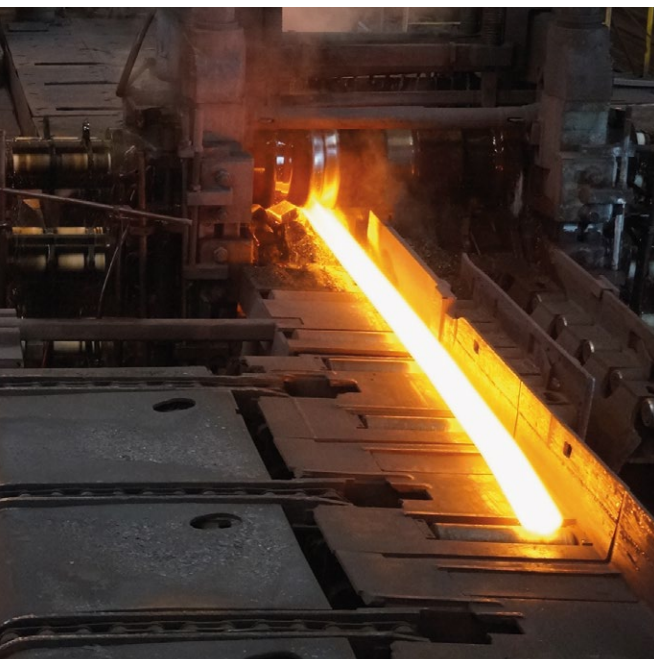
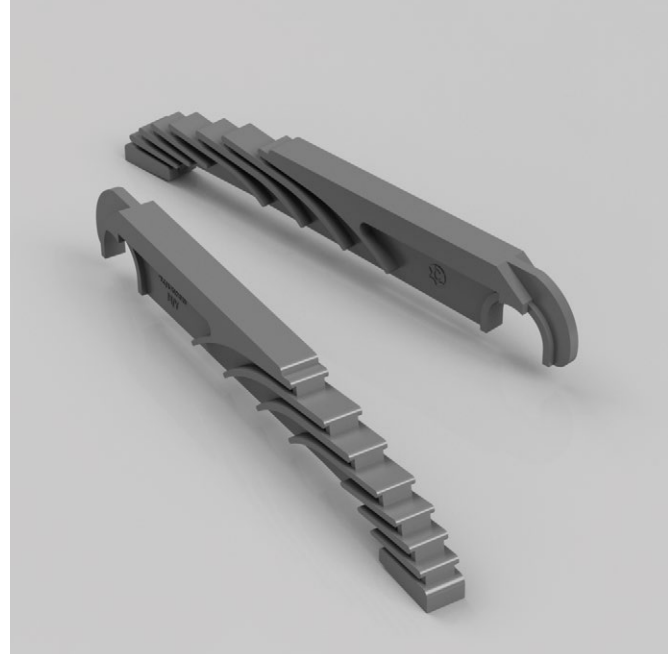
- John King operate in house sprocket and shaft production, sprockets up to 3 metres in diameter,
- Sprockets are available in cast and fabricated styles with split, segmental or solid construction,
- We employ where appropriate tooth forms can be hardened,
- Technicians with long experience in design and application of our product combined with intimate knowledge of the metallurgical considerations of chain production are available to support our customer's in the design, selection and improvement of their chain conveying equipment,
- Where applicable can be supplied with High strength matched shafts.

## Heat Resistant Castings.

Since 1926 John King have been manufacturing cast chains for the materials handling industry. Today we offer a range of high quality heat resistant Nickel and Chromium (Ni/Cr) castings, mainly for use in steam raising power plants.

- Quality guarantee.
- Commercial advantage over OEM supply.
- In house design & pattern making service, including modification of existing castings.
- A rapid response service for emergency replacement castings.
- Free cataloguing and storage of patterns.
- Supply and installation.

**The Company therefore has unrivalled experience in the production of highest quality castings in ductile irons and steel under the "Climax Quality Brand".**

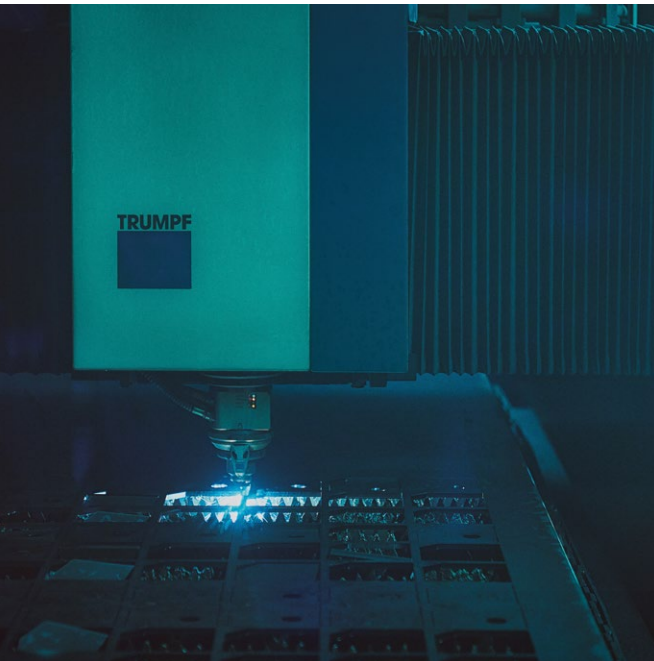


## High Manganese V Groove wear Rail.

In its rolled condition we fix a hardness value of 200-220 Bnh which allows the material to be formed for example in the case of conveyor bends.

The unique materials work hardening properties allows for increases in hardness to over 550Bnh when the right working conditions prevail. Single V Groove is the stock standard. Once hard created an optimum chain running medium for the most aggressive applications.

**All sizes available from UK stock.**



## Laser cutting and Fabrication.

We employ state of the art machinery with both Fiber and Co2 technology as well as plasma profiling and oxyacetylene. Where the ability to offer "one stop shop" is well received by all our customers across a range of industries.

Manufacturing capabilities include press-braking, Fully automated and manual welding, full range of machining capacity including cnc turning milling and drilling.

Double production shifts ensuring capacity is available to meet customer delivery expectations.

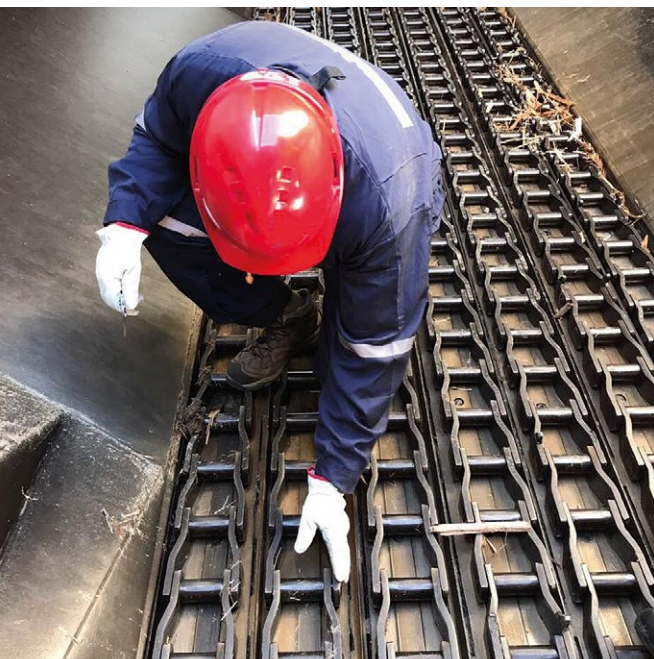
Contact: [sales@johnkinglaser.co.uk](mailto:sales@johnkinglaser.co.uk)

## World Class Lubricants.

John King, working alongside an established lubricants manufacturer, has developed an industry specific range of greases and oils, specifically developed where lubrication is appropriate to compliment the John King Chains product range.

All operational environments are covered:

- temperature,
  - pressure,
  - speed,
  - abrasive,
  - wet,
  - contaminated
- or combination of all of the above.



## Site Service.

John King are recognised worldwide for reliability and extended service life. Employing us to install, service and maintain your equipment ensures it always meets optimum performance, safety and maximum operational efficiency.

Service agreements tailored to your needs:

- Inspections,
- Maintenance supervision,
- Scheduled, preventive maintenance,
- Condition-based, predictive maintenance,
- Repairs & corrective maintenance,
- After modifications,
- 3rd Party Machine fostering,
- Breakdown cover.



## John King Chains Limited

New Climax Works,  
Lancaster Business Park,  
Sherburn-in-Elmet, LS25 6NS, UK

Tel. +44 1977 681 910

Fax +44 1977 681 899

Email: [general@johnkingchains.co.uk](mailto:general@johnkingchains.co.uk)

[www.johnkingchains.com](http://www.johnkingchains.com)



## Branches.

### John King Chains USA Inc.

Birmingham, USA  
Tel. +1 205 593 4279

### John King Chains Central Europe Sp. z o.o.

Nakło nad Notecią, Poland  
Tel. +48 600 871 077

### Cadenas John King Ltda.

Concepción, Chile  
Tel. +56 41 2214948

### John King Chains Ltd.

Rosario, Argentina  
Tel. +54 9 341 214 92 42

### John King Chains (SA) (PTY) Ltd.

Boksburg, South Africa  
Tel. +27 11 894 3570  
Fax +27 11 894 3501

### John King Chains Ltd Southern Office

Dursley, UK  
Tel. +44 1453 543284

