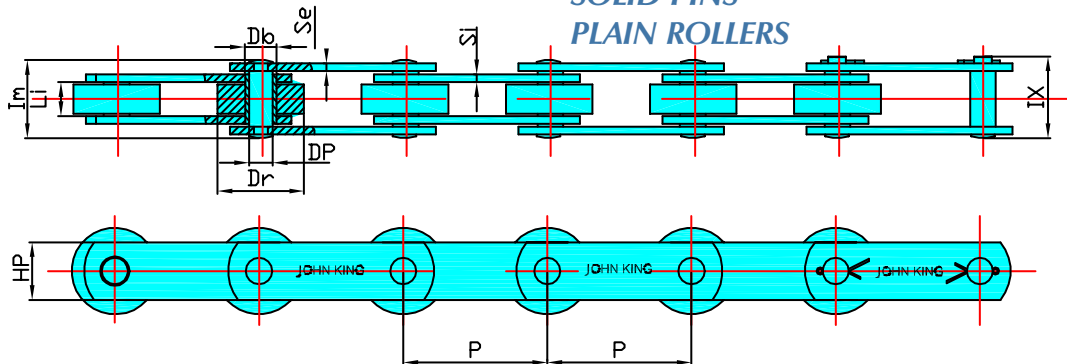


CONVEYOR CHAINS

WORKSHOP STANDARD SOLID PINS PLAIN ROLLERS



CHAIN N°	P mm	Li mm	Dr mm	Db mm	Dp mm	Hp mm	Si mm	Se mm	Im mm	IX mm	ULTIMATE STRENGTH. kN	WEIGHT/METER Kg/m
SP 32/ 050/ P	50											2.70
SP 32/ 075/ P	75											2.10
SP 32/ 100/ P	100	15.0	31.0	13.5	10.0	25	3	3	33	38	32	1.80
SP 32/ 125/ P	125											1.50
SP 32/ 150/ P	150											1.20
SP 45/ 050/ P	50											3.40
SP 45/ 075/ P	75											3.00
SP 45/ 100/ P	100	15.0	31.0	13.5	10.0	25	4	4	37	43	45	2.70
SP 45/ 125/ P	125											2.60
SP 45/ 150/ P	150											2.40
SP 45/ 200/ P	200											2.20
SP 50/ 075/ P	75											3.40
SP 50/ 100/ P	100											3.00
SP 50/ 125/ P	125	18.0	38.0	13.5	10.0	30.0	4.0	4.0	40.0	44	50	2.60
SP 50/ 150/ P	150											2.40
SP 50/ 200/ P	200											2.10
SP 78/ 075/ P	75											5.80
SP 78/ 100/ P	100											4.85
SP 78/ 125/ P	125	22.0	40.0	16.0	12.0	35.0	4.0	4.0	44	49.0	78	4.30
SP 78/ 150/ P	150											4.00
SP 78/ 200/ P	200											3.50
SP 84/ 100/ P	100											5.00
SP 84/ 125/ P	125	25.0	45.0	20.0	14.0	35.0	5.0	5.0	51.0	57.0	84	3.80
SP 84/ 150/ P	150											3.80
SP 84/ 200/ P	200											3.30
SP 100/ 100/ P	100											6.30
SP 100/ 125/ P	125	25.0	50.0	20.0	14.0	40.0	5.0	5.0	51.0	57.0	100	5.60
SP 100/ 150/ P	150											5.10
SP 100/ 200/ P	200											4.30
SP 137/ 100/ P	100											9.40
SP 137/ 125/ P	125	30.0	60.0	21.0	16.0	40.0	6.0	6.0	61	69.0	137	8.15
SP 137/ 150/ P	150											7.10
SP 137/ 200/ P	200											6.30
SP 175/ 125/ P	125											11.00
SP 175/ 150/ P	150	35.0	65.0	24.0	18.0	50.0	6.0	6.0	66.0	75.0	175	10.00
SP 175/ 200/ P	200											8.60
SP 175/ 250/ P	250											7.30
SP 190/ 150/ P	150											14.00
SP 190/ 200/ P	200	40.0	70.0	30.0	20.0	50.0	8.0	8.0	80.0	88.0	190	12.30
SP 190/ 250/ P	250											11.20
SP 190/ 300/ P	300											10.00
SP 270/ 150/ P	150											23.00
SP 270/ 200/ P	200											21.00
SP 270/ 250/ P	250	45.0	80.0	32.0	22.0	60.0	10.0	10.0	92.0	104.0	270	17.00
SP 270/ 300/ P	300											15.10
SP 270/ 350/ P	350											14.00



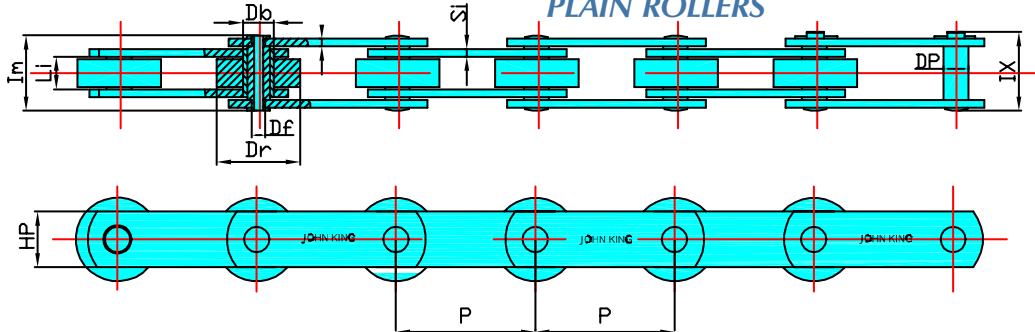
(UK) John King Chains Limited.
New Climax Works, Lancaster Way, Sherburn in Elmet LS25 6NS UK
Telephone: (44) 01977 681910 Facsimile: (44) 01977 681899
E-mail: admin@johnking-chain.com
technical@johnking-chain.com
sales@johnking-chain.com

John King (USA) Inc.
200 Catherine Street, Unit 7B, E. Peoria IL61611 USA
Telephone: 309-698-9250 Facsimile: 309-698-9259
E-mail: salesusa@johnking-chain.com

Web: www.johnkingchains.com

CONVEYOR CHAINS

WORKSHOP STANDARD HOLLOW PINS PLAIN ROLLERS



CHAIN N°	P mm	Li mm	Dr mm	Db mm	Dp mm	Df mm	Hp mm	Si mm	Se mm	Im mm	IX mm	ULTIMATE STRENGTH. kN	WEIGHT/METER Kg/m
HP 24/050/P	50												2.60
HP 24/075/P	75												2.00
HP 24/100/P	100	15.0	31.0	17.0	13.5	10.2	25	3	3	33	35.0	24	1.70
HP 24/125/P	125												1.35
HP 24/150/P	150												1.15
HP 40/050/P	50												3.00
HP 40/075/P	75												2.80
HP 40/100/P	100	15.0	31.0	17.0	13.5	10.2	25	4	4	37	40.0	40	2.40
HP 40/125/P	125												2.20
HP 40/150/P	150												2.10
HP 40/200/P	200												2.00
HP 42/075/P	75												3.30
HP 42/100/P	100												2.80
HP 42/125/P	125	18.0	38.0	17.0	13.5	10.2	30.0	4.0	4.0	40.0	43.0	42	2.50
HP 42/150/P	150												2.30
HP 42/200/P	200												2.00
HP 50/075/P	75												5.60
HP 50/100/P	100												4.60
HP 50/125/P	125	22.0	40.0	21.0	16.0	12.2	35.0	4.0	4.0	44.0	47.0	50	4.20
HP 50/150/P	150												3.80
HP 50/200/P	200												3.30
HP 54/100/P	100												4.70
HP 54/125/P	125	25.0	45.0	21.0	16.0	11.2	35.0	5.0	5.0	51.0	54.0	54	4.00
HP 54/150/P	150												3.50
HP 54/200/P	200												3.00
HP 57/100/P	100												5.90
HP 57/125/P	125	25.0	50.0	24.0	18.0	12.2	40.0	5.0	5.0	51.0	54.0	57	5.20
HP 57/150/P	150												4.70
HP 57/200/P	200												3.90
HP 60/100/P	100												9.00
HP 60/125/P	125	30.0	60.0	29.0	22.0	16.2	40.0	6.0	6.0	60.0	63.0	60	7.80
HP 60/150/P	150												6.60
HP 60/200/P	200												5.85
HP 98/125/P	125												10.00
HP 98/150/P	150	35.0	65.0	32.0	24.0	18.0	50.0	6.0	6.0	65.0	68.0	98	9.00
HP 98/200/P	200												7.50
HP 98/250/P	250												6.20
HP 113/150/P	150												12.20
HP 113/200/P	200	40.0	70.0	34.5	26.0	20.2	50.0	8.0	8.0	80.0	84.0	113	11.00
HP 113/250/P	250												9.80
HP 113/300/P	300												8.30
HP 161/150/P	150												21.00
HP 161/200/P	200	45.0	80.0	38.0	30.0	22.2	60.0	10.0	10.0	88.0	92.0	161	19.00
HP 161/250/P	250												17.00
HP 161/300/P	300												13.00
HP 161/350/P	350												11.80



(UK) John King Chains Limited.
New Climax Works, Lancaster Way, Sherburn in Elmet LS25 6NS UK
Telephone: (44) 01977 681910 Facsimile: (44) 01977 681899
E-mail: admin@johnking-chain.com
technical@johnking-chain.com
sales@johnking-chain.com

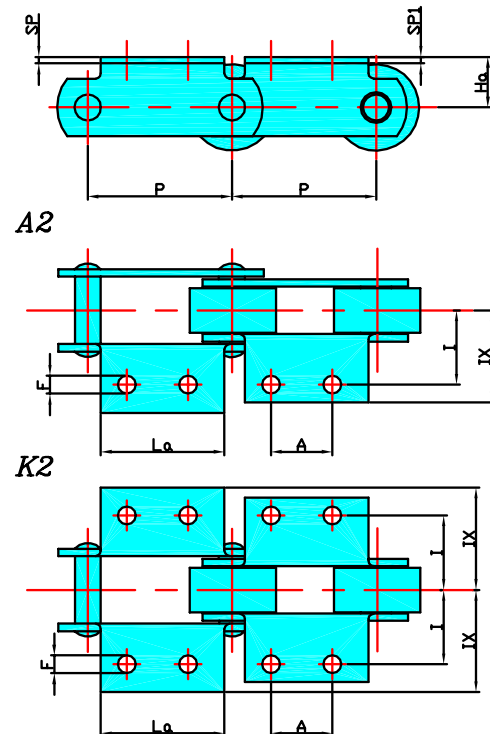
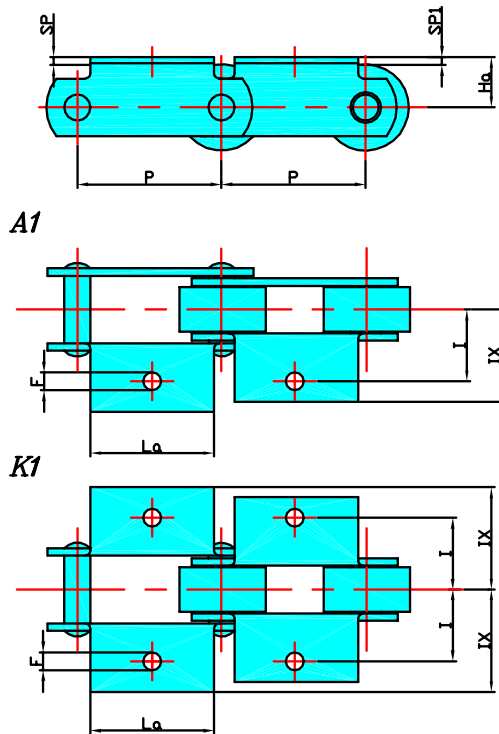
John King (USA) Inc.
200 Catherine Street, Unit 7B, E. Peoria IL61611 USA
Telephone: 309-698-9250 Facsimile: 309-698-9259
E-mail: salesusa@johnking-chain.com

Web: www.johnkingchains.com

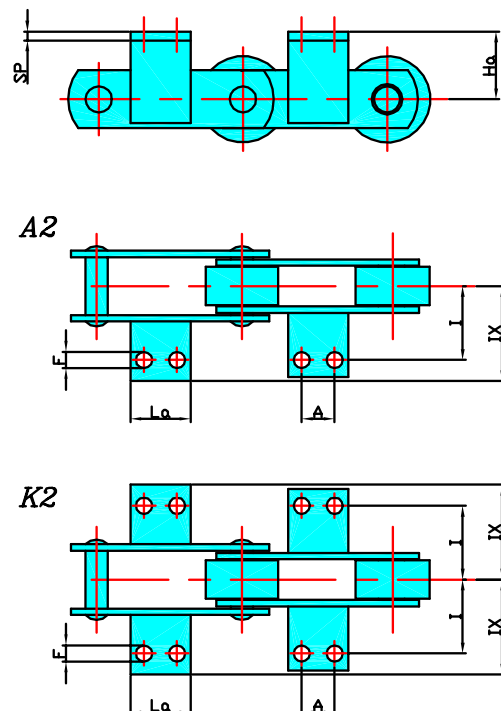
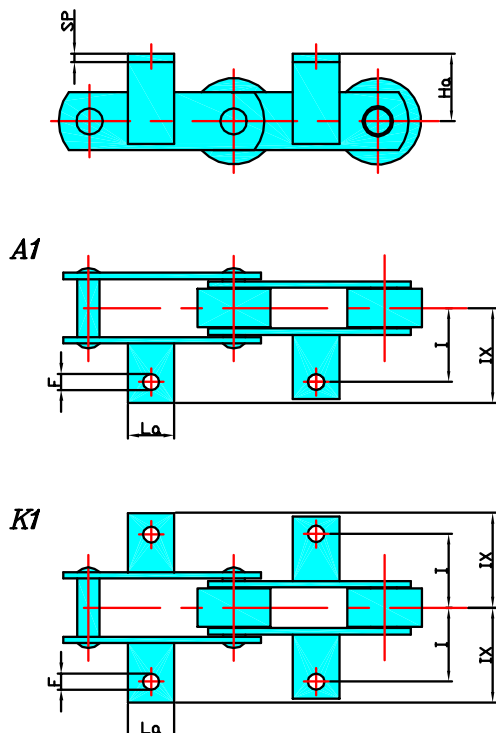
CONVEYOR CHAINS

WORKSHOP STANDARD ATTACHMENTS

CONVEYOR CHAINS WITH BENT ATTACHMENTS



CONVEYOR CHAINS WITH WELDED ATTACHMENTS



CONVEYOR CHAINS

WORKSHOP STANDARD ATTACHMENTS

CHAIN N°	Ha mm	La mm	A mm	F mm	Sp mm	I mm	Ix mm
SP 32/ 050/ P - HP 24/ 050/ P	16/30/35	60	25	10.5	3	31	45
SP 32/ 075/ P - HP 24/ 075/ P	31	60	30	10.5	3	31	45
SP 32/ 100/ P - HP 24/ 100/ P	31	70	35	10.5	3	31	45
SP 32/ 125/ P - HP 24/ 125/ P	31	80	40	10.5	3	31	45
SP 32/ 150/ P - HP 24/ 150/ P	31	115	50	10.5	3	31	45
SP 45/ 050/ P - HP 40/ 050/ P	16/30/35	60	25	10.5	4	31	45
SP 45/ 075/ P - HP 40/ 050/ P	31	60	30	10.5	4	31	45
SP 45/ 100/ P - HP 40/ 050/ P	31	70	35	10.5	4	31	45
SP 45/ 125/ P - HP 40/ 050/ P	31	80	40	10.5	4	31	45
SP 45/ 150/ P - HP 40/ 050/ P	31	115	50	10.5	4	31	45
SP 45/ 200/ P - HP 40/ 050/ P	31	120	60	10.5	4	31	45
SP 50/ 075/ P - HP 42/ 075/ P	31	60	30	10.5	4	31	48
SP 50/ 100/ P - HP 42/ 100/ P	31	65	35	10.5	4	31	48
SP 50/ 125/ P - HP 42/ 125/ P	31	70	40	10.5	4	31	48
SP 50/ 150/ P - HP 42/ 150/ P	31	75	50	10.5	4	31	48
SP 50/ 200/ P - HP 42/ 200/ P	31	80	60	10.5	4	31	48
SP 78/ 075/ P - HP 50/ 075/ P	26	50	30	10.5	4	38	55
SP 78/ 100/ P - HP 50/ 100/ P	26	70	32	10.5	4	38	55
SP 78/ 125/ P - HP 50/ 125/ P	26	80	40	10.5	4	38	55
SP 78/ 150/ P - HP 50/ 150/ P	26	90	50	10.5	4	38	55
SP 78/ 200/ P - HP 50/ 200/ P	26	90	50	10.5	4	38	55
SP 84/ 100/ P - HP 54/ 100/ P	26	70	35	10.5	5	38	55
SP 84/ 125/ P - HP 54/ 125/ P	26	80	40	10.5	5	38	55
SP 84/ 150/ P - HP 54/ 150/ P	26	90	50	10.5	5	38	55
SP 84/ 200/ P - HP 54/ 200/ P	26	90	50	10.5	5	38	55
SP 100/ 100/ P - HP 57/ 100/ P	40	60	35	12.5	5	50	73
SP 100/ 125/ P - HP 57/ 125/ P	40	60	35	12.5	5	50	73
SP 100/ 150/ P - HP 57/ 159/ P	40	80	55	12.5	5	50	73
SP 100/ 200/ P - HP 57/ 200/ P	40	100	60	12.5	5	50	73
SP 137/ 100/ P - HP 60/ 100/ P	40	60	35	12.5	6	50	73
SP 137/ 125/ P - HP 60/ 125/ P	40	60	35	12.5	6	50	73
SP 137/ 150/ P - HP 60/ 150/ P	40	80	55	12.5	6	50	73
SP 137/ 200/ P - HP 60/ 200/ P	40	100	60	12.5	6	50	73
SP 175/ 125/ P - HP 98/ 125/ P	45	60	35	14.5	6	55	80
SP 175/ 150/ P - HP 98/ 150/ P	45	80	55	14.5	6	55	80
SP 175/ 200/ P - HP 98/ 200/ P	45	100	60	14.5	6	55	80
SP 175/ 250/ P - HP 98/ 250/ P	45	120	80	14.5	6	55	80
SP 190/ 150/ P - HP 113/ 150/ P	45	80	50	14.5	8	65	87
SP 190/ 200/ P - HP 113/ 200/ P	45	100	60	14.5	8	65	87
SP 190/ 250/ P - HP 113/ 250/ P	45	120	80	14.5	8	65	87
SP 190/ 300/ P - HP 113/ 300/ P	45	120	80	14.5	8	65	87
SP 270/ 150/ P - HP 161/ 150/ P	50	80	50	14.5	9	70	96
SP 270/ 200/ P - HP 161/ 200/ P	50	100	60	14.5	9	70	96
SP 270/ 250/ P - HP 161/ 250/ P	50	120	80	14.5	9	70	96
SP 270/ 300/ P - HP 161/ 300/ P	50	120	80	14.5	9	70	96
SP 270/ 350/ P - HP 161/ 350/ P	50	120	80	14.5	9	70	96



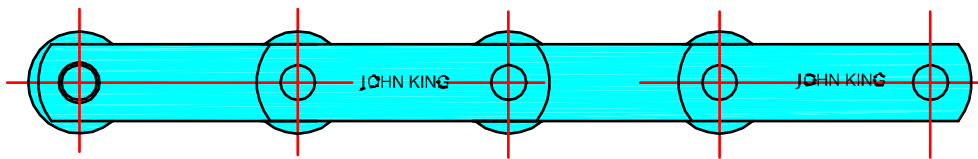
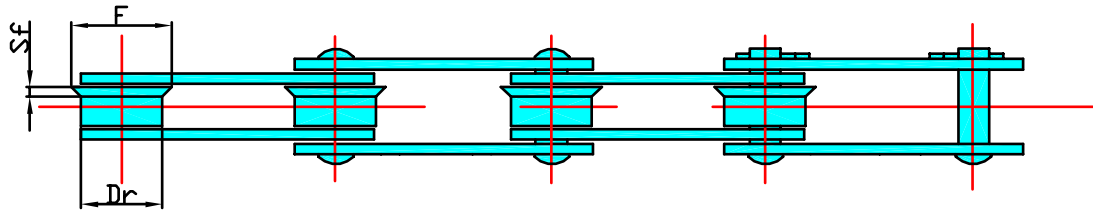
(UK) John King Chains Limited.
 New Climax Works, Lancaster Way, Sherburn in Elmet LS25 6NS UK
 Telephone: (44) 01977 681910 Facsimile: (44) 01977 681899
 E-mail: admin@johnking-chain.com
 technical@johnking-chain.com
 sales@johnking-chain.com

John King (USA) Inc.
 200 Catherine Street, Unit 7B, E. Peoria IL61611 USA
 Telephone: 309-698-9250 Facsimile: 309-698-9259
 E-mail: salesusa@johnking-chain.com

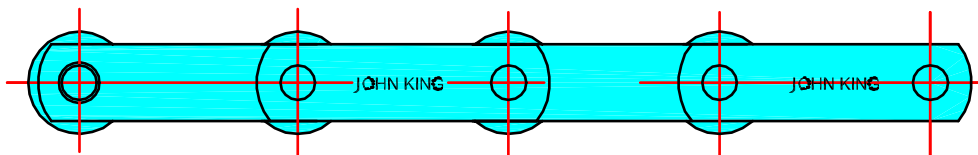
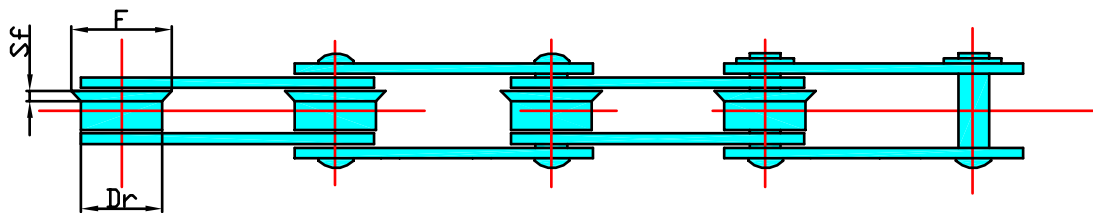
Web: www.johnkingchains.com

CONVEYOR CHAINS

WORKSHOP STANDARD FLANGED ROLLERS



SOLID PINS



HOLLOW PINS

SOLID PINS

CHAIN N°	Dr mm	F mm	Sf mm
SP 32/.../F	31	40	4.0
SP 45/.../F	31	40	4.0
SP 50/.../F	38	45	4.5
SP 78/.../F	40	48	5.0
SP 84/.../F	45	55	5.0
SP 100/.../F	50	65	6.0
SP 137/.../F	60	75	7.0
SP 175/.../F	65	80	8.0
SP 190/.../F	70	90	8.5
SP 270/.../F	80	100	10.0

HOLLOW PINS

CHAIN N°	Dr mm	F mm	Sf mm
HP 24/.../F	31	40	4.0
HP 40/.../F	31	40	4.0
HP 42/.../F	38	45	4.5
HP 50/.../F	40	48	5.0
HP 54/.../F	45	55	5.0
HP 57/.../F	50	65	6.0
HP 60/.../F	60	75	7.0
HP 98/.../F	65	80	8.0
HP 113/.../F	70	90	8.5
HP 161/.../F	80	100	10.0



(UK) John King Chains Limited.
New Climax Works, Lancaster Way, Sherburn in Elmet LS25 6NS UK
Telephone: (44) 01977 681910 Facsimile: (44) 01977 681899
E-mail: admin@johnking-chain.com
technical@johnking-chain.com
sales@johnking-chain.com

John King (USA) Inc.
200 Catherine Street, Unit 7B, E. Peoria IL61611 USA
Telephone: 309-698-9250 Facsimile: 309-698-9259
E-mail: salesusa@johnking-chain.com

Web: www.johnkingchains.com