

## WELDED CHAINS

Higher Ultimate Strength.  
Improved performance over cast chain equivalent.

Weldability - Any style of attachment can easily be welded to standard base chain.

Greater Wear - Improved wear performance with carbon steel plates & heat treated pin & bush.

Heat treating of King climax chain will increase the wearability and prolong the chain life, thus reducing down time and minimizing maintenance problems.

Side Bar -  
Through hardened 28 - 32 rc  
Induction hardened 48 - 55 rc

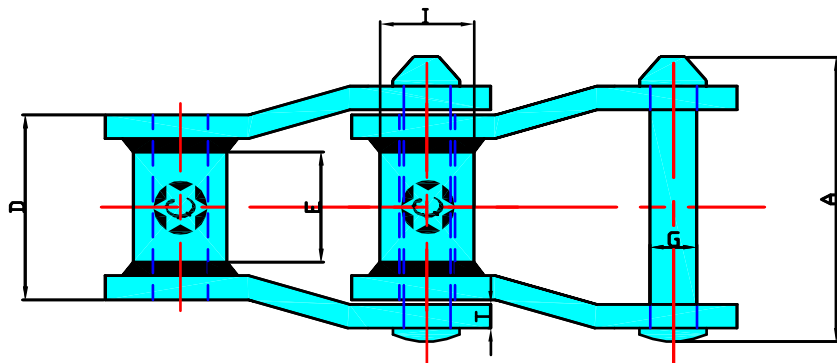
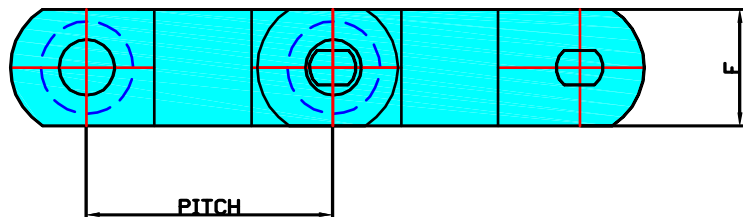
Rivet -  
Induction hardened zone  
0.100 deep 50 - 55 rc

Bush -  
Induction hardened zone  
40 - 45 rc

## WELDED SERIES STEEL

DIRECTION OF TRAVEL FOR DRIVE

FOR CONVEYORS



CHAIN N°	AVERAGE PITCH		A		E		SIDE BARS				PINS		BARREL				MINIMUM ULTIMATE STRENGTH		RATED WORKING LOAD	
	IN	mm	IN	mm	IN	mm	THICKNESS T		HEIGHT F		IN	mm	D	I		lb	kg	lb	kg	
WH 78	2.609	66.3	2.98	75.7	1.12	28.44	0.25	6.35	1.13	28.7	0.5	12.7	2	50.8	0.88	22.35	25500	11567	3000	1361
WH 82	3.075	78.1	3.25	82.55	1.25	31.75	0.25	6.35	1.25	31.75	0.56	14.2	2.25	57.15	1.22	30.9	29500	13381	4400	1996
WH 124	4.000	101.6	4.18	106.2	1.63	41.4	0.38	9.65	1.50	38.1	0.75	19.05	2.81	71.4	1.44	36.58	50500	22907	7350	3334
WH 111	4.760	120.9	4.79	121.7	2.25	57.15	0.38	9.65	1.50	38.1	0.75	19.05	3.38	85.9	1.44	36.58	50500	22907	8850	3788
WH 108	6.000	152.4	4.18	106.2	1.63	41.4	0.38	9.65	1.50	38.1	0.75	19.05	2.81	71.4	1.44	36.58	50500	22907	7350	3334
WH 132	6.050	153.7	6.31	160.2	3	76.2	0.5	12.7	2	50.8	1	25.4	4.38	111.3	1.75	44.45	85500	38783	15000	6804



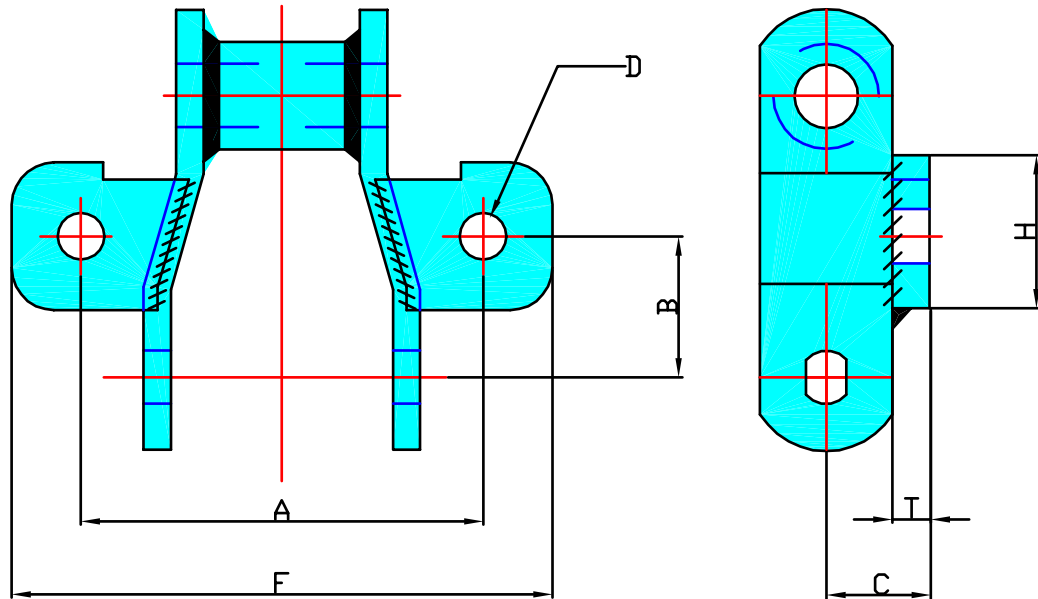
(UK) John King Chains Limited.  
New Climax Works, Lancaster Way, Sherburn in Elmet LS25 6NS UK  
Telephone: (44) 01977 681910 Facsimile: (44) 01977 681899  
E-mail: admin@johnking-chain.com  
technical@johnking-chain.com  
sales@johnking-chain.com

John King (USA) Inc.  
200 Catherine Street, Unit 7B, E. Peoria IL61611 USA  
Telephone: 309-698-9250 Facsimile: 309-698-9259  
E-mail: salesusa@johnking-chain.com

Web: www.johnkingchains.com

## WELDED CHAINS

## WELDED SERIES STEEL



### TYPE K1

CHAIN N°	A		B		C		D				E		F		H		T		AVERAGE WEIGHT PER Ft lb
	IN	mm	IN	mm	IN	mm	BOLT DIA IN	BOLT DIA mm	BOLT HOLE IN	BOLT HOLE mm	IN	mm	IN	mm	IN	mm	IN	mm	
WH 78	4	101.6	1.25	31.75	0.81	20.6	3/8	9.5	0.41	10.4	---	---	5	127	1.25	31.75	0.25	6.35	6
WH 82	4.19	106.4	1.50	38.1	0.88	22.35	3/8	9.5	0.41	10.4	---	---	5.5	139.7	1.75	44.45	0.25	6.35	7



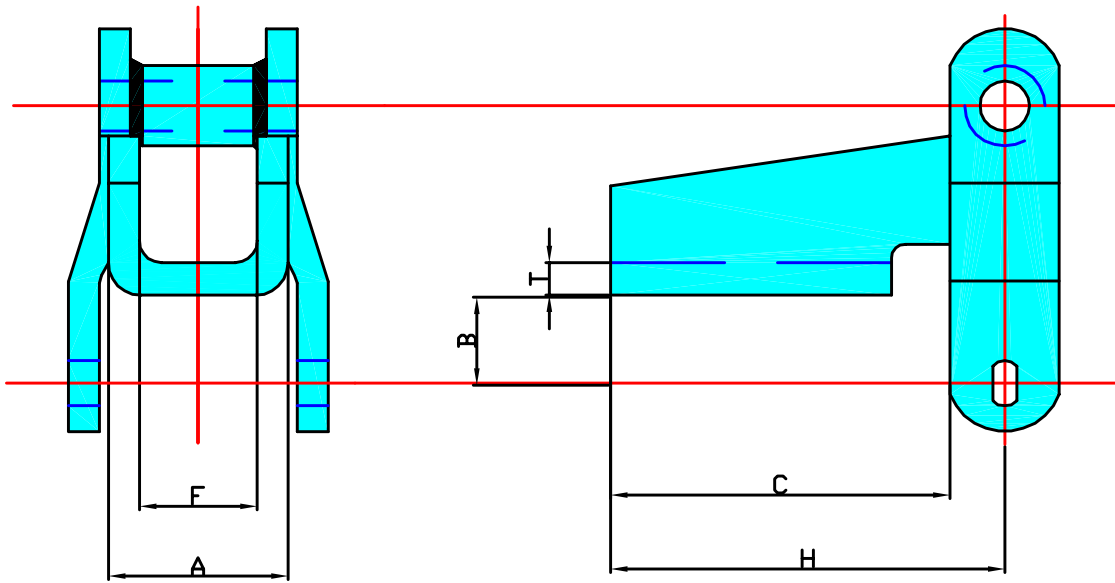
(UK) John King Chains Limited.  
 New Climax Works, Lancaster Way, Sherburn in Elmet LS25 6NS UK  
 Telephone: (44) 01977 681910 Facsimile: (44) 01977 681899  
 E-mail: admin@johnking-chain.com  
 technical@johnking-chain.com  
 sales@johnking-chain.com

John King (USA) Inc.  
 200 Catherine Street, Unit 7B, E. Peoria IL61611 USA  
 Telephone: 309-698-9250 Facsimile: 309-698-9259  
 E-mail: salesusa@johnking-chain.com

Web: www.johnkingchains.com

## WELDED CHAINS

## WELDED SERIES STEEL



## H1 ATTACHMENT

CHAIN N°	A		B		C		D		E	F		H		T		AVERAGE WEIGHT PER Ft lb	
	IN	mm	IN	mm	IN	mm	BOLT DIA IN	BOLT HOLE mm		IN	mm	IN	mm	IN	mm		
WH 78	1.75	44.46	0.50	12.7	3.08	77.7	---	---	---	---	0.88	22.4	3.63	92.2	0.25	6.35	5
WH 82	2	50.8	0.63	16	3	76.2	---	---	---	---	1.13	28.7	3.63	92.2	0.25	6.35	8



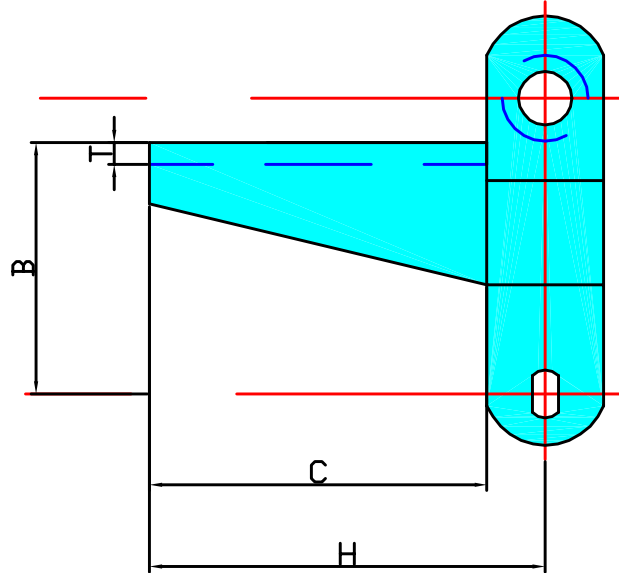
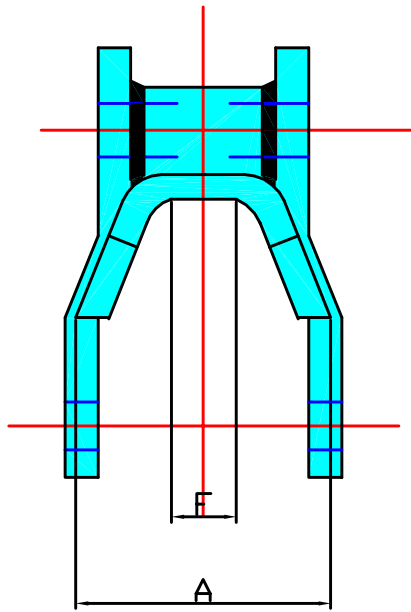
(UK) John King Chains Limited.  
 New Climax Works, Lancaster Way, Sherburn in Elmet LS25 6NS UK  
 Telephone: (44) 01977 681910 Facsimile: (44) 01977 681899  
 E-mail: admin@johnking-chain.com  
 technical@johnking-chain.com  
 sales@johnking-chain.com

John King (USA) Inc.  
 200 Catherine Street, Unit 7B, E. Peoria IL61611 USA  
 Telephone: 309-698-9250 Facsimile: 309-698-9259  
 E-mail: salesusa@johnking-chain.com

Web: www.johnkingchains.com

## WELDED CHAINS

## WELDED SERIES STEEL



## H2 ATTACHMENT

CHAIN N°	A		B		C		D		E		F		H		T		AVERAGE WEIGHT PER Ft lb
	IN	mm	IN	mm	IN	mm	BOLT DIA IN	BOLT HOLE mm	IN	mm	IN	mm	IN	mm	IN	mm	
WH 78	2.94	74.7	2.38	60.5	3	76.2	---	---	---	---	1	25.4	3.56	90.4	0.25	6.35	8
WH 82	2.56	65	2.69	68.3	3	76.2	---	---	---	---	1	25.4	3.63	92.2	0.25	6.35	9



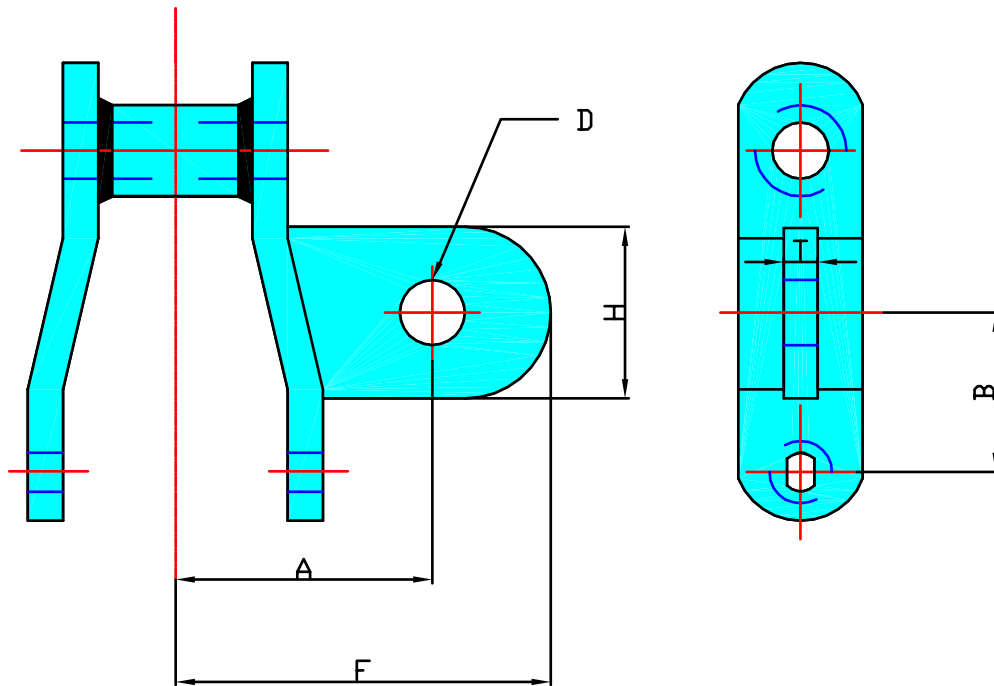
(UK) John King Chains Limited.  
New Climax Works, Lancaster Way, Sherburn in Elmet LS25 6NS UK  
Telephone: (44) 01977 681910 Facsimile: (44) 01977 681899  
E-mail: admin@johnking-chain.com  
technical@johnking-chain.com  
sales@johnking-chain.com

John King (USA) Inc.  
200 Catherine Street, Unit 7B, E. Peoria IL61611 USA  
Telephone: 309-698-9250 Facsimile: 309-698-9259  
E-mail: salesusa@johnking-chain.com

Web: www.johnkingchains.com

## WELDED CHAINS

## WELDED SERIES STEEL



A22

CHAIN N°	A		B		C		D				E		F		H		T		AVERAGE WEIGHT PER Ft lb
	IN	mm	IN	mm	IN	mm	BOLT DIA IN	BOLT DIA mm	BOLT HOLE IN	BOLT HOLE mm	IN	mm	IN	mm	IN	mm	IN	mm	
WH 78	1.88	47.8	1.31	32.27	---	---	3/8	9.5	0.41	10.4	---	---	2.5	63.5	1	25.4	0.38	9.65	5



(UK) John King Chains Limited.  
New Climax Works, Lancaster Way, Sherburn in Elmet LS25 6NS UK  
Telephone: (44) 01977 681910 Facsimile: (44) 01977 681899  
E-mail: admin@johnking-chain.com  
technical@johnking-chain.com  
sales@johnking-chain.com

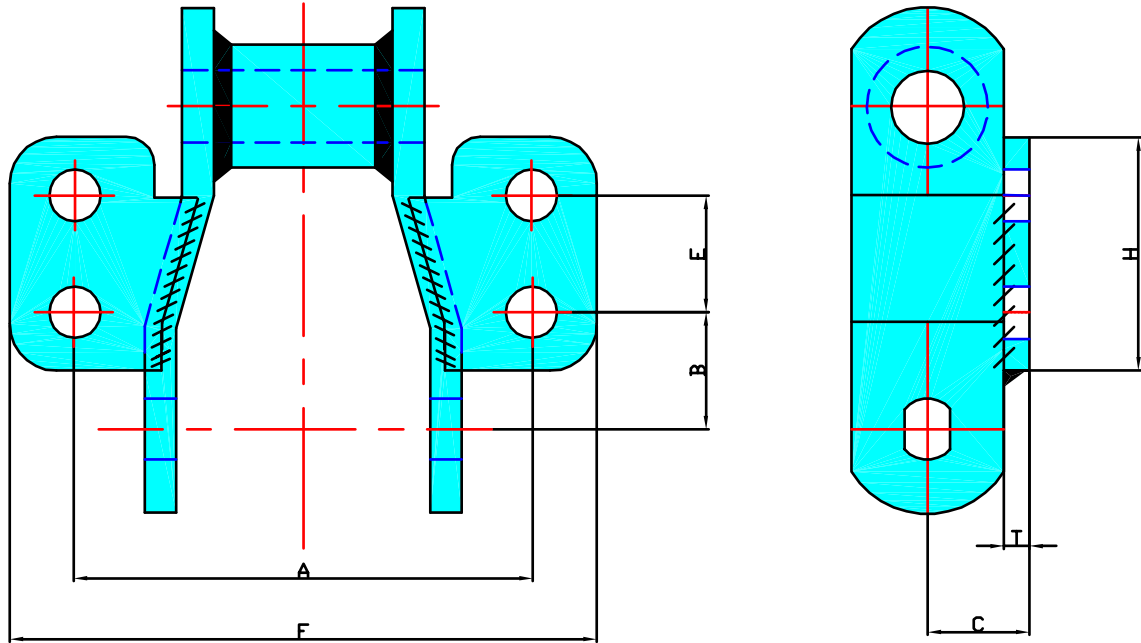
John King (USA) Inc.  
200 Catherine Street, Unit 7B, E. Peoria IL61611 USA  
Telephone: 309-698-9250 Facsimile: 309-698-9259  
E-mail: salesusa@johnking-chain.com

Web: www.johnkingchains.com

WD1.5

## WELDED CHAINS

## WELDED SERIES STEEL



### TYPE K2

CHAIN N°	A		B		C		D				E		F		H		T		AVERAGE WEIGHT PER F <sup>t</sup> lb
	IN	mm	IN	mm	IN	mm	BOLT DIA IN	BOLT DIA mm	BOLT HOLE IN	BOLT HOLE mm	IN	mm	IN	mm	IN	mm	IN	mm	
WH 78	4	101.6	0.41	10.4	0.81	20.6	3/8	9.5	0.41	10.4	1.13	28.7	5	127	2	50.8	0.25	6.35	6
WH 82	4.25	108	0.75	19.05	0.88	22.35	3/8	9.5	0.41	10.4	1.31	33.27	5.38	136.7	2.25	57.15	0.25	6.35	8
WH 111	6.25	158.8	1.22	30.9	1.13	28.7	1/2	12.7	0.56	14.2	2.31	58.67	7.50	190.5	3.5	88.9	0.38	9.65	12
WH 124	5.25	133.4	0.88	22.35	1.13	28.7	3/8	9.5	0.41	14.2	1.94	49.28	6.38	162	3	76.2	0.38	9.65	12
WH 132	7.5	190.5	1.63	41.4	1.50	38.1	1/2	12.7	0.56	14.2	2.75	69.85	9.19	233	4.25	108	0.50	12.7	19



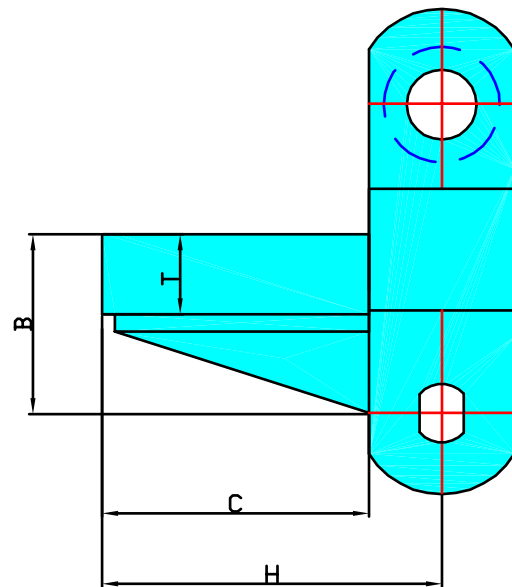
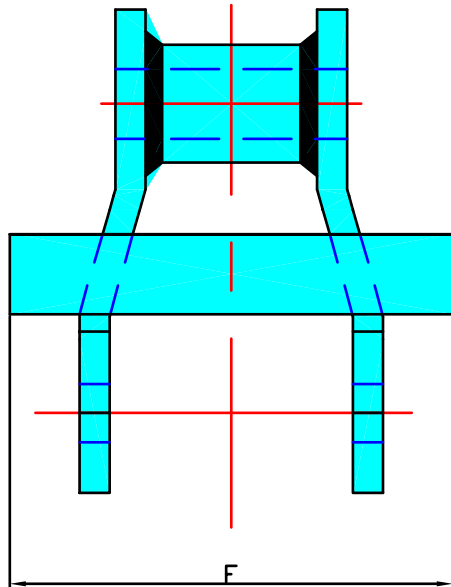
(UK) John King Chains Limited.  
 New Climax Works, Lancaster Way, Sherburn in Elmet LS25 6NS UK  
 Telephone: (44) 01977 681910 Facsimile: (44) 01977 681899  
 E-mail: [admin@johnking-chain.com](mailto:admin@johnking-chain.com)  
[technical@johnking-chain.com](mailto:technical@johnking-chain.com)  
[sales@johnking-chain.com](mailto:sales@johnking-chain.com)

John King (USA) Inc.  
 200 Catherine Street, Unit 7B, E. Peoria IL61611 USA  
 Telephone: 309-698-9250 Facsimile: 309-698-9259  
 E-mail: [salesusa@johnking-chain.com](mailto:salesusa@johnking-chain.com)

Web: [www.johnkingchains.com](http://www.johnkingchains.com)

## WELDED CHAINS

## WELDED SERIES STEEL



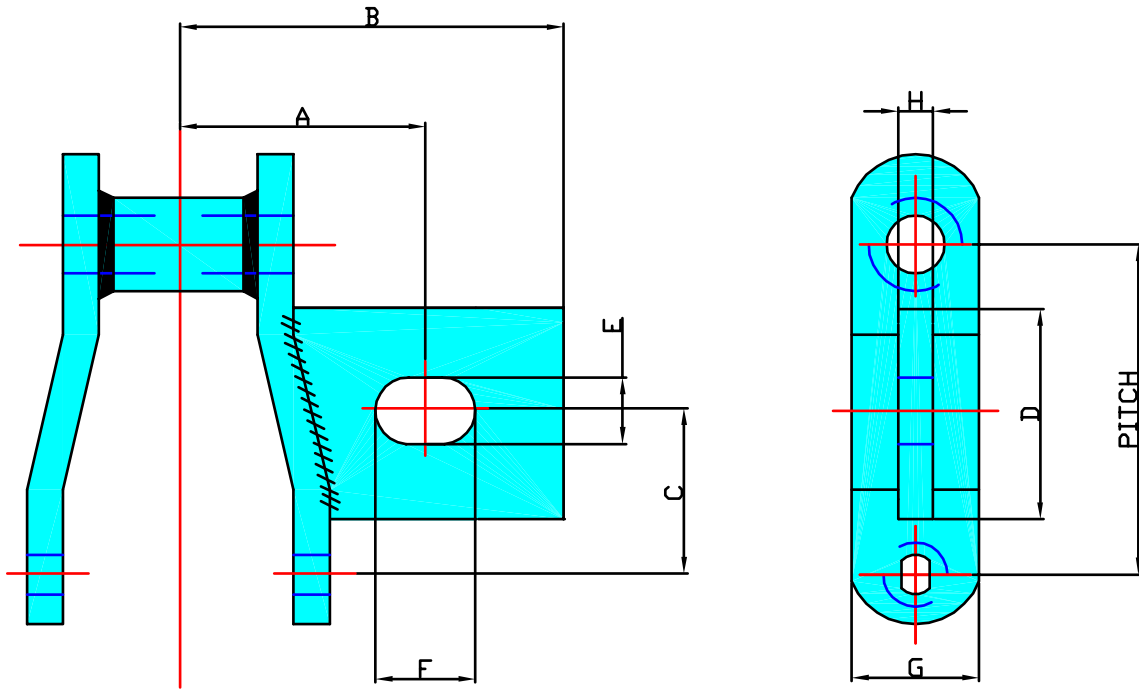
## RF2 ATTACHMENT

CHAIN N°	A		B		C		D		E		F		H		T		AVERAGE WEIGHT PER FT lb
	IN	mm	IN	mm	IN	mm	BOLT DIA IN	BOLT HOLE mm	IN	mm	IN	mm	IN	mm	IN	mm	
WH 78	---	---	1.5	38.1	2.13	54.1	---	---	---	---	3	7.62	2.69	68.3	0.63	16	10
WH 124	---	---	2.5	63.5	2.5	63.5	---	---	---	---	4.25	108	3.25	88.25	1	24.5	19



## WELDED CHAINS

## WELDED SERIES STEEL SPECIAL A22 ATTACHMENT



## SPECIAL SLOTTED A22 FOR WAFFERIZER CHAINS

CHAIN N°	PITCH		A		B		C		D		E		F		G		H	
	IN	mm	IN	mm	IN	mm	IN	mm	IN	mm	IN	mm	IN	mm	IN	mm	IN	mm
WH 124	4	101.6	4.18	102.5	6.24	153	1.84	45	3	76.2	0.83	21	1.57	40	1.97	50	0.47	12
WH 106	6	152.4	4.18	102.5	6.24	153	2.24	57	3	76.2	0.83	21	1.57	40	1.97	50	0.47	12



(UK) John King Chains Limited.  
New Climax Works, Lancaster Way, Sherburn in Elmet LS25 6NS UK  
Telephone: (44) 01977 681910 Facsimile: (44) 01977 681899  
E-mail: [admin@johnking-chain.com](mailto:admin@johnking-chain.com)  
[technical@johnking-chain.com](mailto:technical@johnking-chain.com)  
[sales@johnking-chain.com](mailto:sales@johnking-chain.com)

John King (USA) Inc.  
200 Catherine Street, Unit 7B, E. Peoria IL61611 USA  
Telephone: 309-698-9250 Facsimile: 309-698-9259  
E-mail: [salesusa@johnking-chain.com](mailto:salesusa@johnking-chain.com)

Web: [www.johnkingchains.com](http://www.johnkingchains.com)

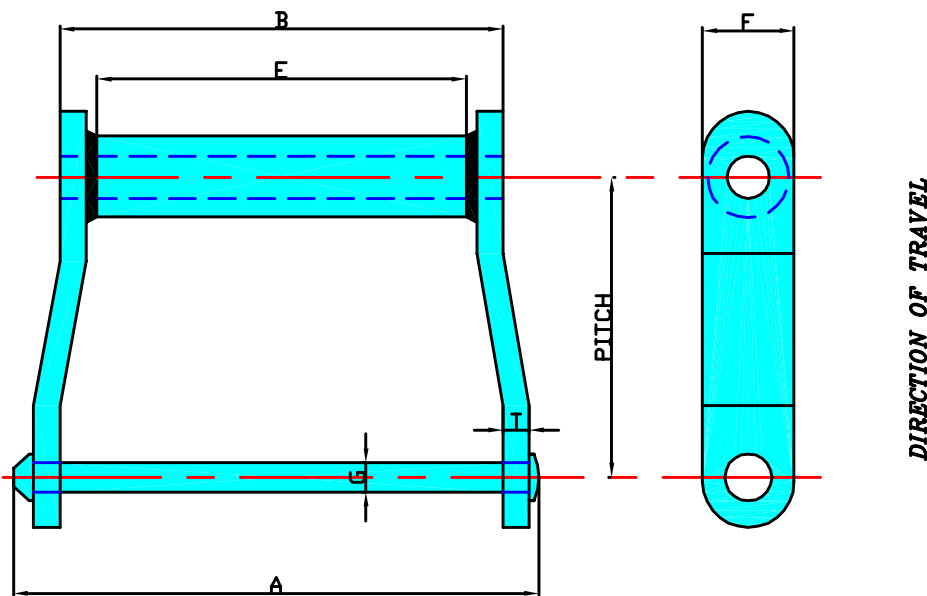
## WELDED CHAINS

## WELDED SERIES STEEL

### Welded steel drag chain

provides efficient economical service when used in chip and sawdust conveyors, and similar applications.

Features include original formed barrel design for complete rivet to barrel contact for maximum rivet wear, higher impact strength, weldability of attachments and option of heat treatment and/or induction hardening of specific parts.



CHAIN N°	AVERAGE PITCH		A		E		SIDE BARS				PINS G		BARREL D		MINIMUM ULTIMATE STRENGTH		RATED WORKING LOAD		AVERAGE WEIGHT PER Ft
	IN	mm	IN	mm	IN	mm	IN	mm	IN	mm	IN	mm	IN	mm	lb	kg	lb	kg	
WH 102	5.000	127	9.13	231.9	6.5	165.1	0.38	9.65	1.5	38.1	0.75	19.05	7.75	196.9	38300	17373	8500	3855.7	11
WH 104	6.000	152.4	6.75	171.5	4.13	104.9	0.38	9.65	1.5	38.1	0.75	19.05	5.38	136.7	38300	17373	8600	3855.7	9
WH 110	6.000	152.4	11.8	299.7	9	228.6	0.38	9.65	1.5	38.1	0.75	19.05	10.38	236.7	38300	17373	8600	3855.7	12
WH 112	8.000	203.2	11.8	299.7	9	228.6	0.38	9.65	1.5	38.1	0.75	19.05	10.38	236.7	38300	17373	8600	3855.7	10
WH 113	6.000	152.4	12.5	317.5	9	228.6	0.50	12.7	1.5	38.1	0.88	22.35	10.63	270	48000	21773	9300	4218.5	18
WH 116	8.000	203.2	15.5	393.7	13	330.2	0.38	9.65	1.75	44.45	0.75	19.05	14.13	258.9	55000	24948	10700	4853.5	13
WH 118	8.000	203.2	16.8	426.7	13.3	337.8	0.50	12.7	2	50.8	0.88	22.35	14.88	378	70000	31752	12300	5579.2	21
WH 120	6.000	152.4	12.1	307.3	8.75	222.3	0.50	12.7	2	50.8	0.88	22.35	10.25	260.4	70000	31752	15000	6804	20
WH 480	8.000	203.2	14.6	370.8	11.2	284.5	0.50	12.7	2	50.8	0.88	22.35	12.75	323.9	70000	31752	12300	5579.2	18



(UK) John King Chains Limited.  
New Climax Works, Lancaster Way, Sherburn in Elmet LS25 6NS UK  
Telephone: (44) 01977 681910 Facsimile: (44) 01977 681899  
E-mail: admin@johnking-chain.com  
technical@johnking-chain.com  
sales@johnking-chain.com

John King (USA) Inc.  
200 Catherine Street, Unit 7B, E. Peoria IL61611 USA  
Telephone: 309-698-9250 Facsimile: 309-698-9259  
E-mail: salesusa@johnking-chain.com

Web: www.johnkingchains.com

## WELDED CHAINS

Higher Ultimate Strength.  
Improved performance over cast chain equivalent.

Weldability - Any style of attachment can easily be welded to standard base chain.

Greater Wear - Improved wear performance with carbon steel plates & heat treated pin & bush.

Heat treating of King climax chain will increase the wearability and prolong the chain life, thus reducing down time and minimizing maintenance problems.

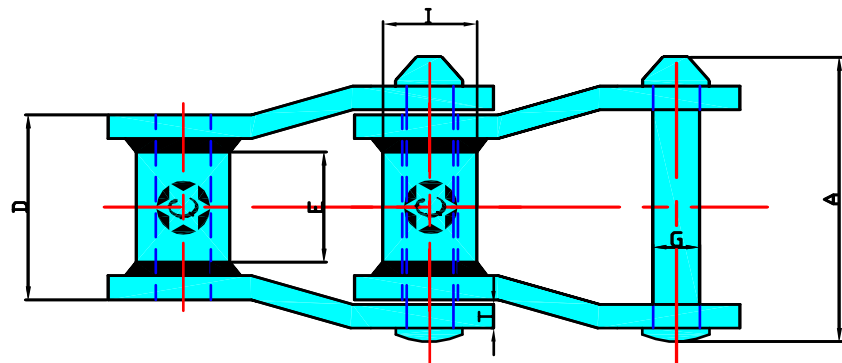
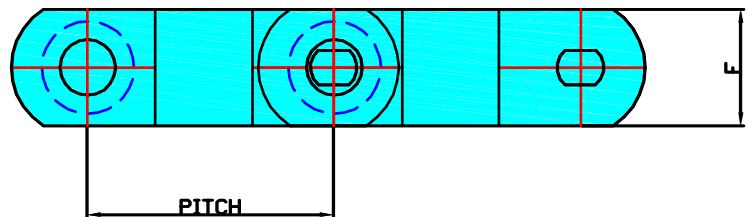
Side Bar -  
Through hardened 28 - 32 rc  
Induction hardened 48 - 55 rc

Rivet -  
Induction hardened zone  
0.100 deep 50 - 55 rc

Bush -  
Induction hardened zone  
40 - 45 rc

## WELDED SERIES STEEL

DIRECTION OF TRAVEL FOR DRIVE  
FOR CONVEYORS



CHAIN N°	AVERAGE PITCH		A		E		SIDE BARS				PINS		BARREL				MINIMUM ULTIMATE STRENGTH		RATED WORKING LOAD		
	IN	mm	IN	mm	IN	mm	THICKNESS T		HEIGHT F		IN	mm	D	I	IN	mm	IN	mm	lb	kg	lb
WH 78	2.609	66.3	2.98	75.7	1.12	28.44	0.25	6.35	1.13	28.7	0.5	12.7	2	50.8	0.88	22.35	25500	11567	3000	1361	
WH 82	3.075	78.1	3.25	82.55	1.25	31.75	0.25	6.35	1.25	31.75	0.56	14.2	2.25	57.15	1.22	30.9	29500	13381	4400	1996	
WH 124	4.000	101.6	4.18	106.2	1.63	41.4	0.38	9.65	1.50	38.1	0.75	19.05	2.81	71.4	1.44	36.58	50500	22907	7350	3334	
WH 111	4.760	120.9	4.79	121.7	2.26	57.15	0.38	9.65	1.50	38.1	0.75	19.05	3.38	86.9	1.44	36.58	50500	22907	8850	3788	
WH 106	6.000	152.4	4.18	106.2	1.63	41.4	0.38	9.65	1.50	38.1	0.75	19.05	2.81	71.4	1.44	36.58	50500	22907	7350	3334	
WH 132	6.050	153.7	6.31	160.2	3	76.2	0.5	12.7	2	50.8	1	25.4	4.38	111.3	1.75	44.45	85500	38783	15000	6804	



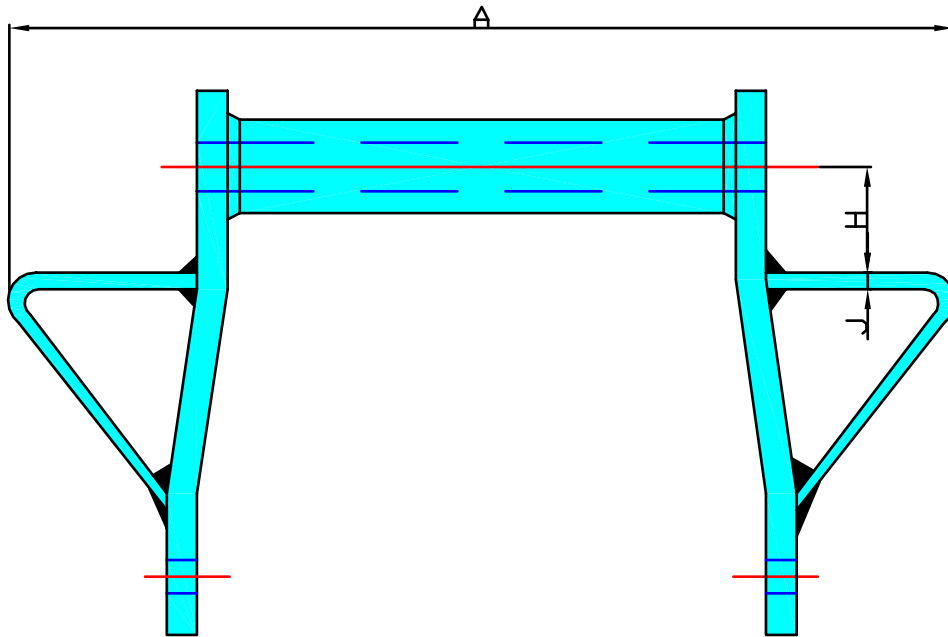
(UK) John King Chains Limited.  
New Climax Works, Lancaster Way, Sherburn in Elmet LS25 6NS UK  
Telephone: (44) 01977 681910 Facsimile: (44) 01977 681899  
E-mail: admin@johnking-chain.com  
technical@johnking-chain.com  
sales@johnking-chain.com

John King (USA) Inc.  
200 Catherine Street, Unit 7B, E. Peoria IL61611 USA  
Telephone: 309-698-9250 Facsimile: 309-698-9259  
E-mail: salesusa@johnking-chain.com

Web: www.johnkingchains.com

## WELDED CHAINS

## WELDED SERIES STEEL



## WING ATTACHMENT

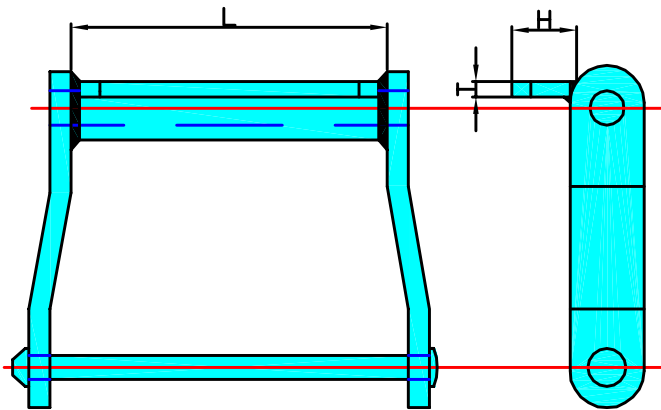
CHAIN N°	A	B	F	T	AVERAGE WEIGHT PER Ft
WH102	14.38 365.3	1.75 44.5	1.50 38.1	0.38 9.65	15
WH104	11.50 292.1	2.75 69.9	1.50 38.1	0.38 9.65	11
WH110	17.00 431.8	2.63 66.8	1.50 38.1	0.38 9.65	16
WH112	17.00 431.8	3.25 82.6	1.50 38.1	0.38 9.65	13
WH116	22.00 558.8	3.25 82.6	1.75 44.5	0.38 9.65	18
WH120	17.00 431.8	3.25 82.6	2.00 50.8	0.50 12.7	28
WH480	22.00 558.8	3.25 82.6	2.00 50.8	0.50 12.7	25



## WELDED CHAINS

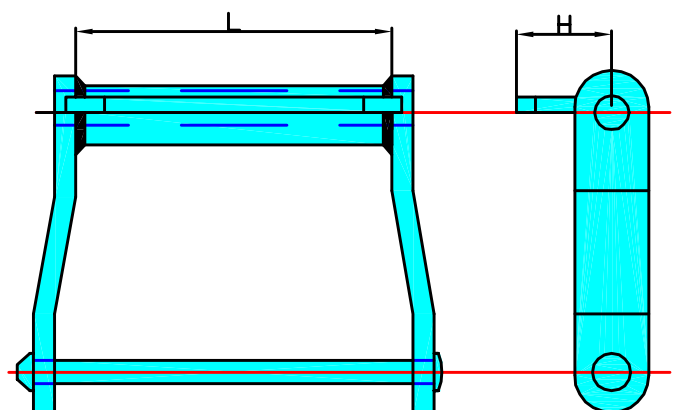
## WELDED SERIES STEEL

### C-1/2\*



**NOTE: C-1/2\* ATTACHMENTS ARE WELDED ON FRONT OF BARREL**

### C-1, C-3 AND C-4



**NOTE: C-1, C-3 AND C-4 ATTACHMENTS ARE WELDED ON TOP OF BARREL**

ATTACHMENTS	CHAIN N°	H	K	L	T	AVERAGE WEIGHT PER FT		
C-1/2*	WH102	1.5	38.1	---	6.75	171.5	0.38 9.65	---
	WH104	1.5	38.1	---	4.5	114.3	0.38 9.65	---
	WH110	1.5	38.1	---	9.25	235	0.38 9.65	---
	WH112	1.5	38.1	---	9.25	235	0.38 9.65	---
	WH113	1.5	38.1	---	9	228.6	0.5 12.7	---
	WH116	1.75	44.45	---	13	330.2	0.38 9.65	---
	WH118	2	50.8	---	13.5	342.9	0.5 12.7	---
	WH120	2	50.8	---	9	228.5	0.5 12.7	---
	WH480	2	50.8	---	11.5	292.1	0.5 12.7	---
C-1	WH102	1.50	38.1	0.38 9.65	6.38	162	0.38 9.65	15
	WH104	2.38	60.5	0.38 9.65	4.13	104.9	0.38 9.65	11
	WH110	2.38	60.5	0.38 9.65	9.13	231.9	0.38 9.65	17
	WH112	2.38	60.5	0.38 9.65	9.13	231.9	0.38 9.65	14
	WH116	2.63	66.8	0.38 9.65	12.75	322.6	0.38 9.65	20
C-3	WH113	2.25	57.15	0.50 12.7	9.13	231.9	0.50 12.7	19
	WH118	3	76.2	0.50 12.7	13.00	330.2	0.50 12.7	25
	WH120	3	76.2	0.50 12.7	8.63	219.2	0.50 12.7	26
	WH480	3	76.2	0.50 12.7	11.13	282.7	0.50 12.7	26
C-4	WH102	3.75	95.25	0.38 9.65	6.38	162	0.38 9.65	18
	WH104	3.75	95.25	0.38 9.65	4.13	104.9	0.38 9.65	12
	WH110	3.75	95.25	0.38 9.65	9.13	231.9	0.38 9.65	21
	WH112	3.75	95.25	0.38 9.65	9.13	231.9	0.38 9.65	17
	WH113	4.75	120.65	0.50 12.7	9.13	231.9	0.50 12.7	28
	WH116	4.88	123.95	0.38 9.65	12.75	322.6	0.38 9.65	25
	WH480	5.00	127	0.50 12.7	11.13	282.7	0.50 12.7	33



(UK) John King Chains Limited.  
 New Climax Works, Lancaster Way, Sherburn in Elmet LS25 6NS UK  
 Telephone: (44) 01977 681910 Facsimile: (44) 01977 681899  
 E-mail: admin@johnking-chain.com  
 technical@johnking-chain.com  
 sales@johnking-chain.com

John King (USA) Inc.  
 200 Catherine Street, Unit 7B, E. Peoria IL61611 USA  
 Telephone: 309-698-9250 Facsimile: 309-698-9259  
 E-mail: salesusa@johnking-chain.com

Web: www.johnkingchains.com

## WELDED CHAINS

## WELDED SERIES STEEL

Heavy Duty Welded Steel Drag Chains: Heavy duty drag chains are ideal for conditions where severe abrasion and heat exist. They offer these important features and benefits:-

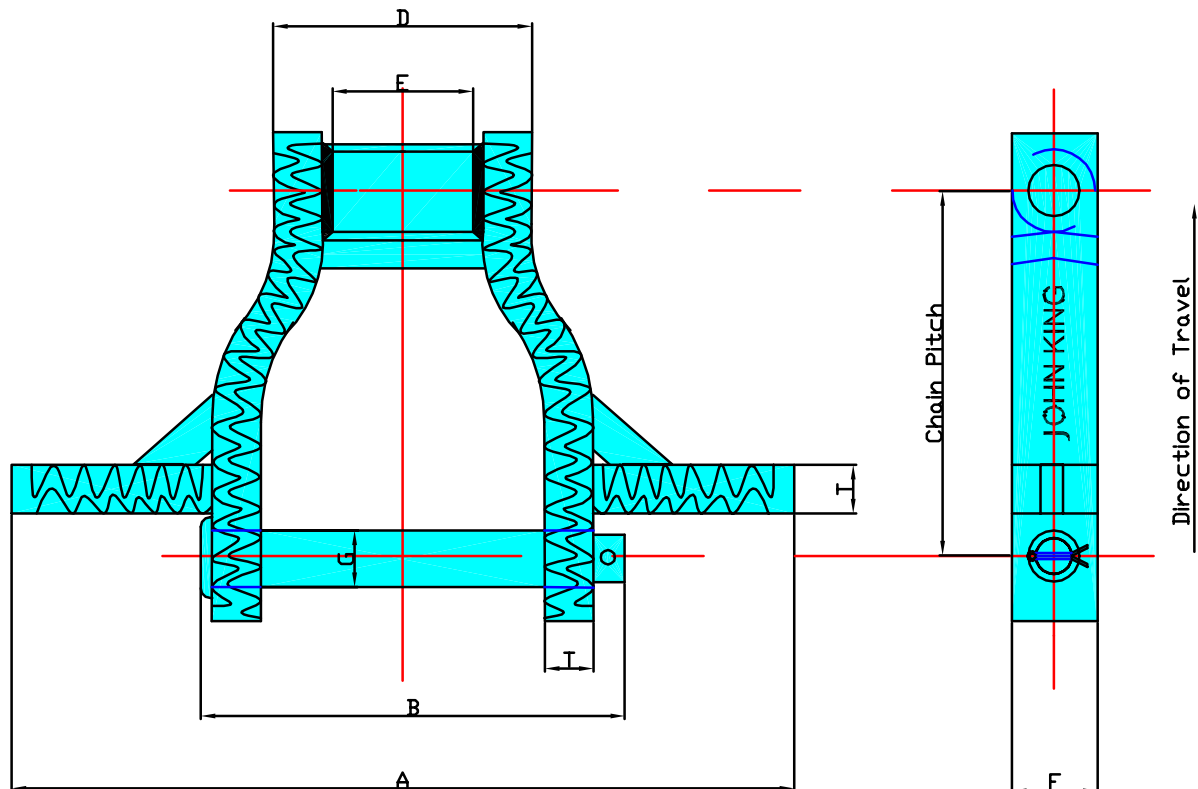
Hardface Welding on both of the chains sliding surfaces is standard. A typical weld hardness of 60 RC and a heavy weld bead give this chain excellent sliding wear resistance in cold and hot clinker applications.

Interference Fits between the pin and chain sidebar dramatically improves chain strength and joint wear life over that of a cast drag chain. In addition, no loose pins to move around in the chain joint

An Induction Hardened Pin affords the best of two worlds- a 60 RC typical hardened case and impact resistant material in the core of the pin. The result is longer service life and good resistance to shock loads.

Square Edges On The Wing and Sidebar of welded drag chain convey more efficiently than rounded cast chain edges. They also move a deeper bed of material with each revolution of chain.

Heat Treated and Steel Components eliminate the failures that cast chains experience from casting porosity and inclusions



Dimensions are in inches. Strengths, loads and weights are in pounds.

CHAIN N°	AVERAGE PITCH	A	SIDEBARS			PINS			BARREL LENGTH		MINIMUM ULTIMATE STRENGTH	RATED WORKING LOAD
			THICKNESS T	HEIGHT F	HEAT TREAT	B	C	HEAT TREAT	D	E		
WHX5157	6.050	8 to 14	0.63	2.5	TH	6.94	1.13	SIH	4.63	2.75	117000	18200
WHX6067	9.000	10 to 26	0.75	2.5	TH	8.19	1.25	CIH	5.5	3.63	195000	24300
WHX5121	9.000	10 to 30	1.13	2.5	TH	9.75	1.25	CIH	6.31	3.63	205000	27600
WHX6121	9.000	10 to 30	1.13	2.5	TH	9.75	1.25	CIH	6.31	3.63	205000	27600

Note: 1. (A) 2 inch increments

2. WHX5157 is dimensionally the same as WHX6121 except it runs closed end forward.



(UK) John King Chains Limited.  
New Climax Works, Lancaster Way, Sherburn in Elmet LS25 6NS UK  
Telephone: (44) 01977 681910 Facsimile: (44) 01977 681899  
E-mail: admin@johnking-chain.com  
technical@johnking-chain.com  
sales@johnking-chain.com

John King (USA) Inc.  
200 Catherine Street, Unit 7B, E. Peoria IL61611 USA  
Telephone: 309-698-9250 Facsimile: 309-698-9259  
E-mail: salesusa@johnking-chain.com

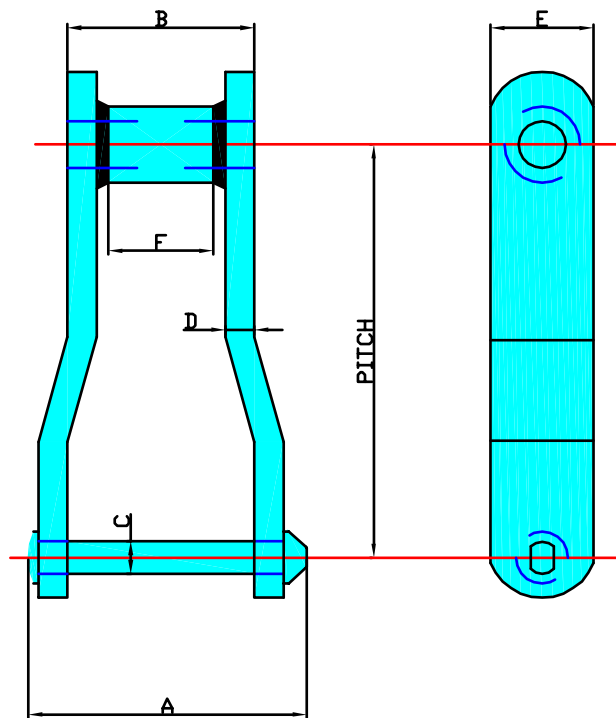
Web: www.johnkingchains.com

## WELDED CHAINS

King chain for sedimentation tanks and bar screens

King sewerage treatment plant chains of welded steel construction provide an alternative to traditional malleable chains. A higher ultimate strength, and fabricated from alloy steel, allow for the longest possible life on sedimentation tank, bar screen, and grit channel applications.

## WELDED SERIES STEEL



CHAIN N°	AVERAGE PITCH IN INCHES	ULTIMATE STRENGTH IN lbs	LINKS PER FOOT	AVERAGE WEIGHT PER FOOT IN lbs	APPROX OVERALL WIDTH	LENGTH OF BEARING	RIVET DIA.	SIDE BAR THICKNESS	SIDE BAR HEIGHT	APPROX. TOOTH FACE AT PITCH LINE	OUTSIDE BARREL DIA
					A	B	C	D	E	F	G
WH 720S	6.000	50.400	2	6.5	3 <sup>7</sup> / <sub>8</sub>	2 <sup>3</sup> / <sub>8</sub>	3/4	3/8	1/2	1/8	1/4



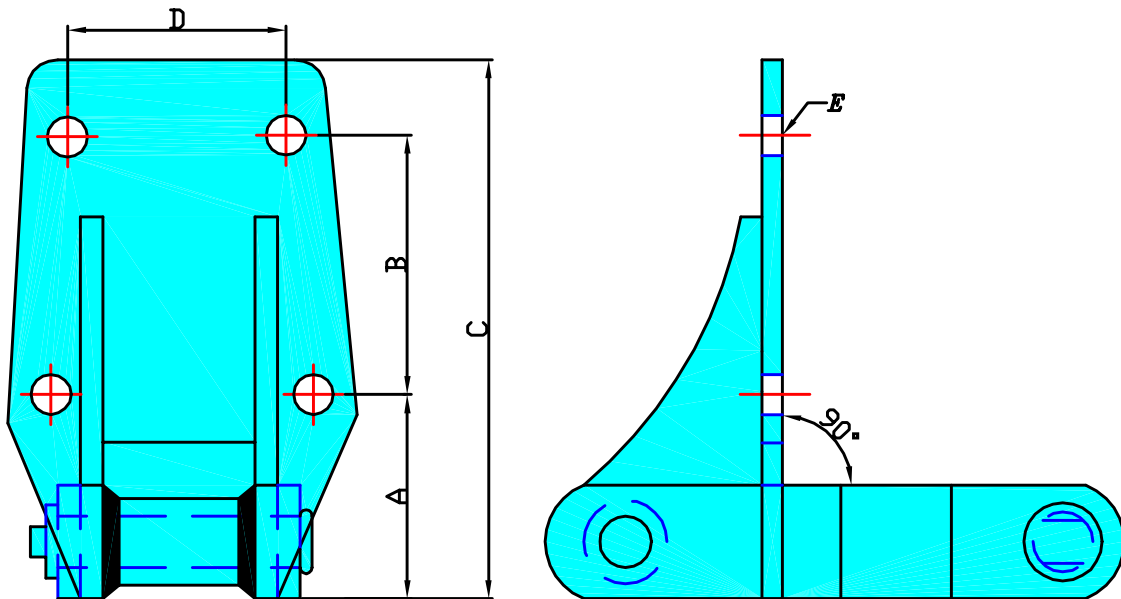
(UK) John King Chains Limited.  
 New Climax Works, Lancaster Way, Sherburn in Elmet LS25 6NS UK  
 Telephone: (44) 01977 681910 Facsimile: (44) 01977 681899  
 E-mail: admin@johnking-chain.com  
 technical@johnking-chain.com  
 sales@johnking-chain.com

John King (USA) Inc.  
 200 Catherine Street, Unit 7B, E. Peoria IL61611 USA  
 Telephone: 309-698-9250 Facsimile: 309-698-9259  
 E-mail: salesusa@johnking-chain.com

Web: www.johnkingchains.com

## WELDED CHAINS

## WELDED SERIES STEEL F28 ATTACHMENT



CHAIN N°	A	B	C	D	E
WH 720S	3/8	4 1/2	8 27/32	3 3/4	3/8



(UK) John King Chains Limited.  
New Climax Works, Lancaster Way, Sherburn in Elmet LS25 6NS UK  
Telephone: (44) 01977 681910 Facsimile: (44) 01977 681899  
E-mail: [admin@johnking-chain.com](mailto:admin@johnking-chain.com)  
[technical@johnking-chain.com](mailto:technical@johnking-chain.com)  
[sales@johnking-chain.com](mailto:sales@johnking-chain.com)

John King (USA) Inc.  
200 Catherine Street, Unit 7B, E. Peoria IL61611 USA  
Telephone: 309-698-9250 Facsimile: 309-698-9259  
E-mail: [salesusa@johnking-chain.com](mailto:salesusa@johnking-chain.com)

Web: [www.johnkingchains.com](http://www.johnkingchains.com)