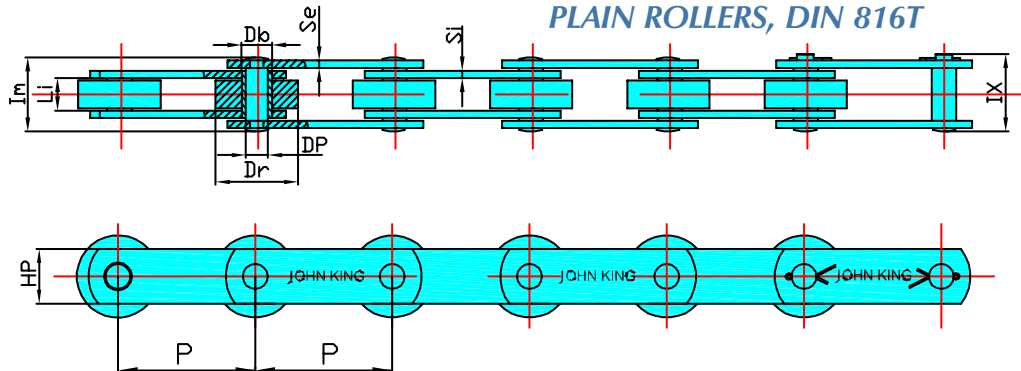


CONVEYOR CHAINS

ISO SERIES SOLID PINS

PLAIN ROLLERS, DIN 816T



CHAIN N°	P mm	Li mm	Dr mm	Db mm	Dp mm	Hp mm	Si mm	Se mm	Im mm	IX mm	BREAKING LOAD kN	WEIGHT/METER Kg/m
M 40/063/P	63											3.70
M 40/080/P	80											3.30
M 40/100/P	100											2.90
M 40/125/P	125	19	36	12.5	8.5	25	4	4	42	46	40	3.60
M 40/160/P	160											1.90
M 40/200/P	200											1.30
M 40/250/P	250											
M 56/063/P	63											8.20
M 56/080/P	80											7.60
M 56/100/P	100	24	42	15	10	30	4	4	46	50	56	6.70
M 56/125/P	125											5.80
M 56/160/P	160											5.15
M 80/080/P	80											8.00
M 80/100/P	100											7.00
M 80/125/P	125											6.00
M 80/160/P	160	28	50	18.0	12	35	5	5	54	59	80	5.40
M 80/200/P	200											4.60
M 80/250/P	250											4.00
M 80/315/P	315											3.20
M 112/080/P	80											10.50
M 112/100/P	100											9.00
M 112/125/P	125											8.00
M 112/160/P	160	32	60	21.0	15	40	6	6	62	68	112	7.30
M 112/200/P	200											7.00
M 112/250/P	250											6.30
M 112/315/P	315											5.80
M 112/400/P	400											5.00
M 160/100/P	100											14.00
M 160/125/P	125											12.40
M 160/160/P	160											11.00
M 160/200/P	200	36	70	25.0	18	50	7	7	72	80	160	10.00
M 160/250/P	250											9.20
M 160/315/P	315											8.00
M 160/400/P	400											7.00
M 160/500/P	500											5.90
M 224/125/P	125											28.30
M 224/160/P	160											24.80
M 224/200/P	200	42	85	30.0	21	60	8	8	82	90	224	23.50
M 224/250/P	250											21.80
M 224/315/P	315											19.50
M 224/400/P	400											18.00
M 224/500/P	500											16.00
M 315/160/P	160											31.00
M 315/200/P	200											29.00
M 315/250/P	250	48	100	36.0	25	70	10	10	97	107	315	25.80
M 315/315/P	315											22.50
M 315/400/P	400											20.00
M 315/500/P	500											17.70



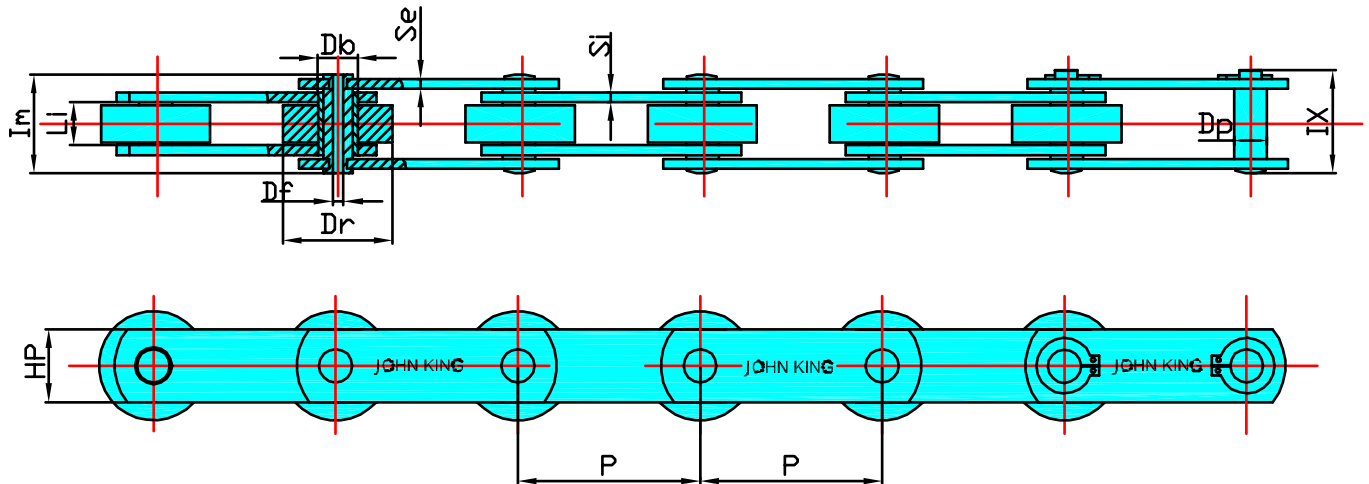
(UK) John King Chains Limited.
 New Climax Works, Lancaster Way, Sherburn in Elmet LS25 6NS UK
 Telephone: (44) 01977 681910 Facsimile: (44) 01977 681899
 E-mail: admin@johnking-chain.com
 technical@johnking-chain.com
 sales@johnking-chain.com

John King (USA) Inc.
 200 Catherine Street, Unit 7B, E. Peoria IL61611 USA
 Telephone: 309-698-9250 Facsimile: 309-698-9259
 E-mail: salesusa@johnking-chain.com

Web: www.johnkingchains.com

CONVEYOR CHAINS

ISO SERIES HOLLOW PINS PLAIN ROLLERS, DIN 8168



CHAIN N°	P mm	Li mm	Dr mm	Db mm	Dp mm	Df mm	Hp mm	Si mm	Se mm	Im mm	IX mm	BREAKING LOAD kN	WEIGHT/METER Kg/m
MC 28 / 063 / P	63												3.50
MC 28 / 080 / P	80												3.05
MC 28 / 100 / P	100	19	36	17.5	13.0	8.5	25	4.0	4.0	41	44	28	2.75
MC 28 / 125 / P	125												2.40
MC 28 / 160 / P	160												
MC 56 / 080 / P	80												8.20
MC 56 / 100 / P	100												7.60
MC 56 / 125 / P	125	23	50	21.0	15.1	10.2	35	5.0	5.0	48.5	52	56	6.70
MC 56 / 160 / P	160												5.80
MC 56 / 200 / P	200												5.15
MC 56 / 250 / P	250												4.70
MC 112 / 100 / P	100												14.10
MC 112 / 125 / P	125												13.40
MC 112 / 160 / P	160	32	70	29.0	22.0	14.3	50	6.0	6.0	62	65	112	11.90
MC 112 / 200 / P	200												10.60
MC 112 / 250 / P	250												9.50
MC 112 / 315 / P	315												8.20
MC 224 / 160 / P	160												28.35
MC 224 / 200 / P	200												24.80
MC 224 / 250 / P	250	42	100	41.0	30.0	20.3	70	10.0	10.0	90	93	224	21.80
MC 224 / 315 / P	315												19.50
MC 224 / 400 / P	400												17.00
MC 224 / 500 / P	500												15.80



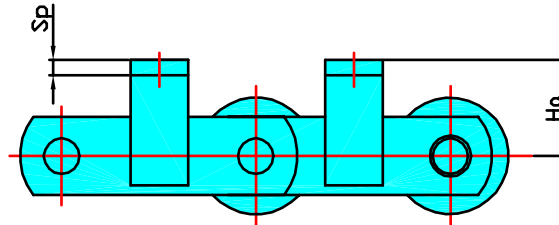
(UK) John King Chains Limited.
New Climax Works, Lancaster Way, Sherburn in Elmet LS25 6NS UK
Telephone: (44) 01977 681910 Facsimile: (44) 01977 681899
E-mail: admin@johnking-chain.com
technical@johnking-chain.com
sales@johnking-chain.com

John King (USA) Inc.
200 Catherine Street, Unit 7B, E. Peoria IL61611 USA
Telephone: 309-698-9250 Facsimile: 309-698-9259
E-mail: salesusa@johnking-chain.com

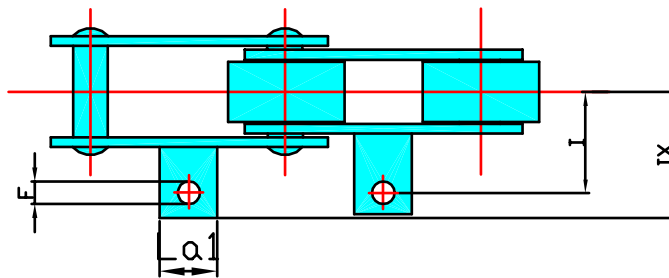
Web: www.johnkingchains.com

CONVEYOR CHAINS

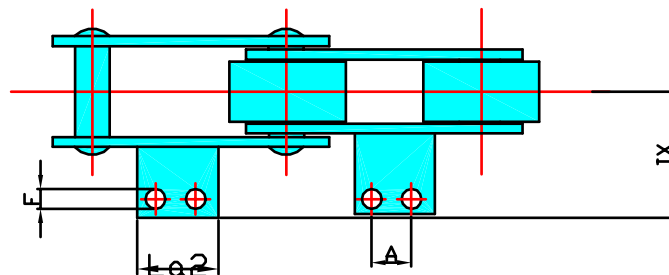
ISO SERIES ATTACHMENTS



Type A



Type B



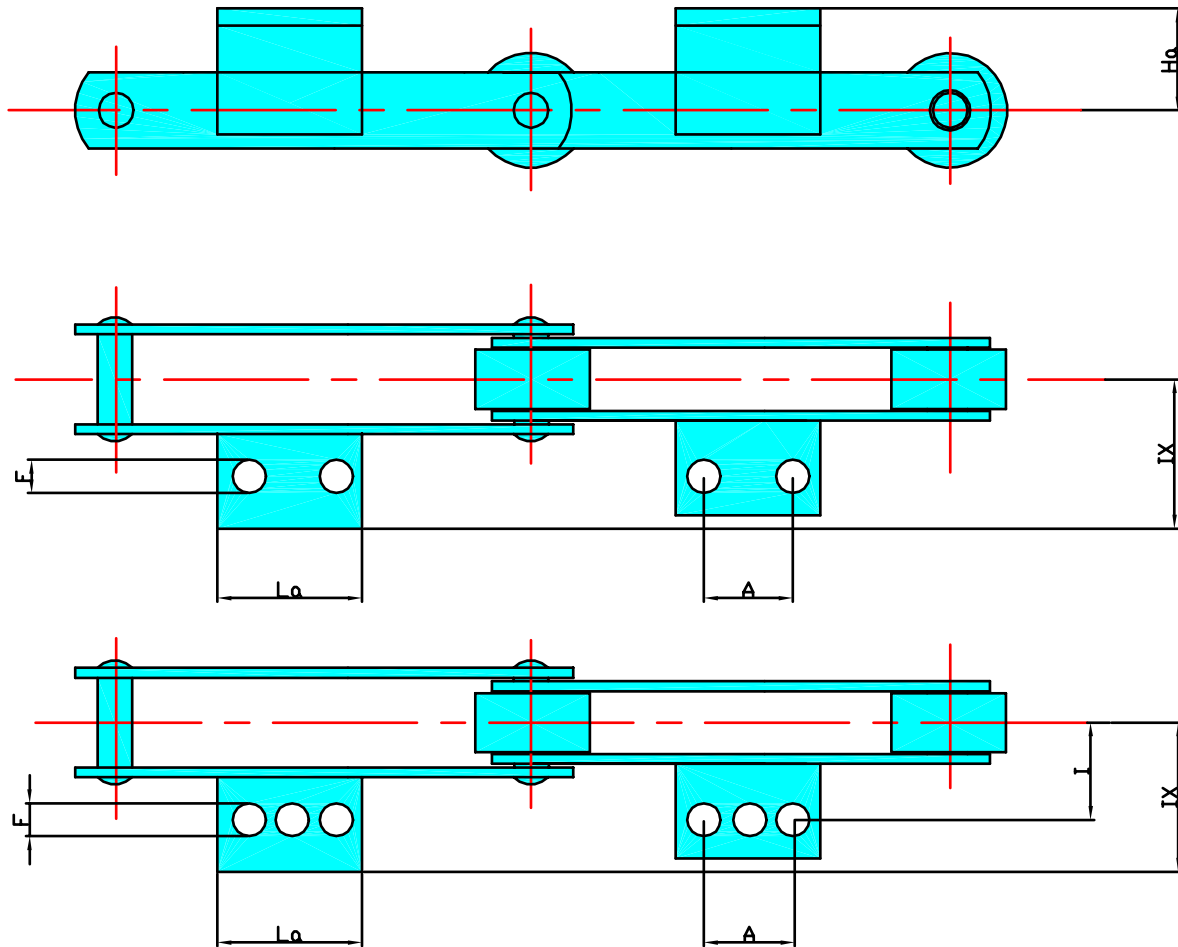
CHAIN N°	MIN PITCH Type A mm	MIN PITCH Type B mm	Ha mm	La1 mm	La2 mm	F mm	I mm	IX mm	Angle mm
M 40	63	80	25	25	40	9	35	56	35x4
M 80	80	100	35	35	70	11	48	70	45x4
M 112	100	125	40	40	70	14	55	80	50x5
M 160	125	160	45	50	80	14	62	95	60x6
M 224	160	200	55	60	110	18	70	110	70x7
M 315	160	200	65	60	90	18	80	125	80x8
MC 28	80	80	25	25	40	9	35	50	30x4
MC 56	100	100	35	30	75	11	44	65	40x4
MC 112	125	125	45	35	80	14	55	80	50x5
MC 224	160	160	65	50	90	18	70	110	70x8



CONVEYOR CHAINS

ISO SERIES ATTACHMENTS

Type C



CHAIN N°	MIN PITCH Type C mm	Ha mm	La mm	A mm	F mm	I mm	IX mm	Angle mm
M 40	100	25	60	40	9	35	56	35x4
M 80	160	35	110	85	11	48	70	45x4
M 112	160	40	100	65	14	55	80	50x5
M 160	200	45	120	85	14	62	95	60x6
M 224	250	55	170	125	18	70	110	70x7
M 315	250	65	140	100	18	80	125	80x8
MC 28	100	25	60	40	9	35	50	30x4
MC 56	160	35	110	85	11	44	65	40x4
MC 112	200	45	120	85	14	55	80	50x5
MC 224	250	65	140	100	18	70	110	70x8

Attachment C available with 2 and 3 holes



(UK) John King Chains Limited.
New Climax Works, Lancaster Way, Sherburn in Elmet LS25 6NS UK
Telephone: (44) 01977 681910 Facsimile: (44) 01977 681899
E-mail: admin@johnking-chain.com
technical@johnking-chain.com
sales@johnking-chain.com

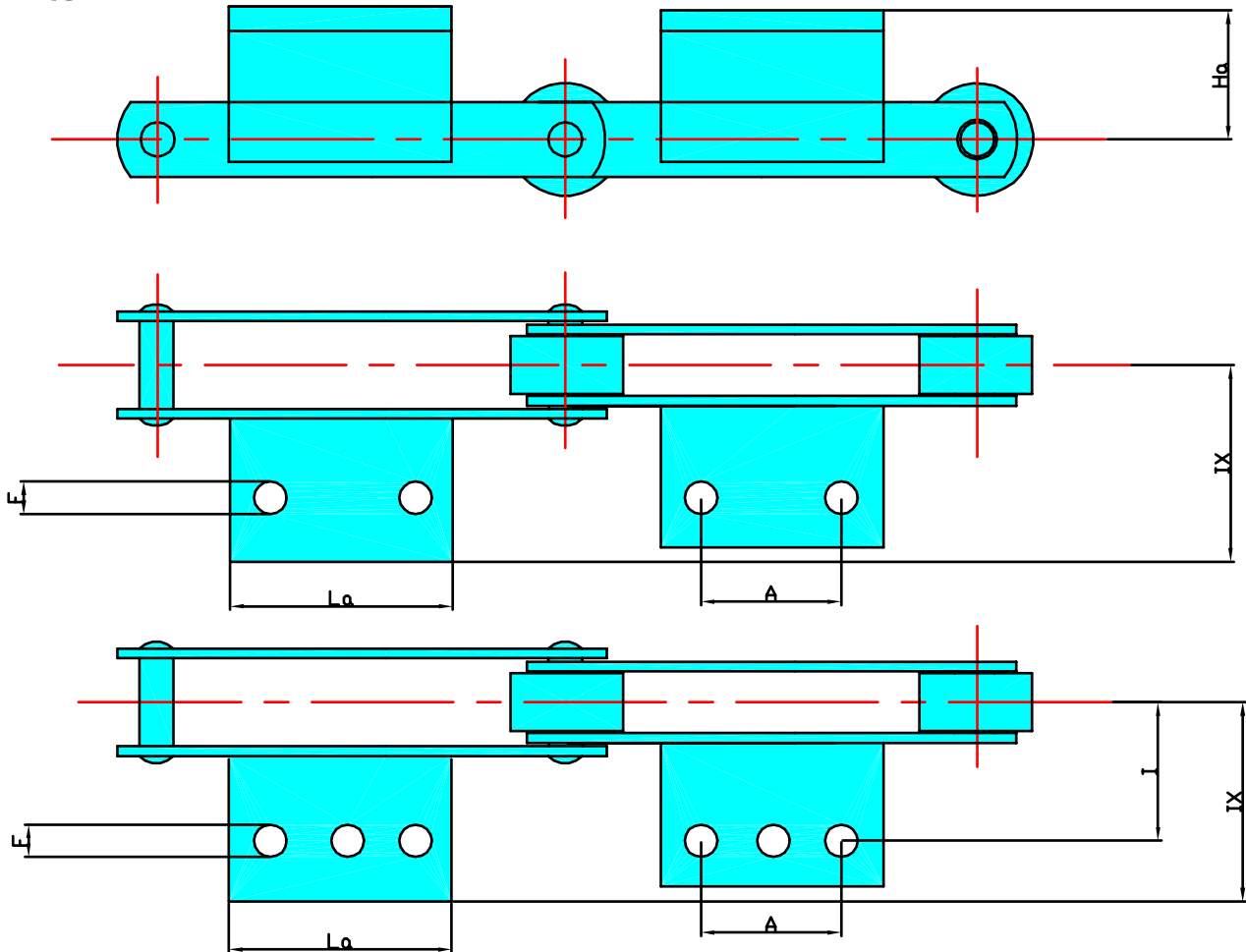
John King (USA) Inc.
200 Catherine Street, Unit 7B, E. Peoria IL61611 USA
Telephone: 309-698-9250 Facsimile: 309-698-9259
E-mail: salesusa@johnking-chain.com

Web: www.johnkingchains.com

CONVEYOR CHAINS

ISO SERIES ATTACHMENTS

Type D



CHAIN N°	MIN PITCH Type D mm	Ha mm	La mm	A mm	F mm	I mm	IX mm	Angle mm
M 40	125	25	85	65	9	35	56	35x4
M 80	200	35	150	125	11	48	70	45x4
M 112	200	40	140	100	14	55	80	50x5
M 160	200	45	180	145	14	62	95	60x6
M 224	250	55	230	190	18	70	110	70x7
M 315	315	65	200	155	18	80	125	80x8
MC 28	125	25	85	65	9	35	50	30x4
MC 56	200	35	150	125	11	44	65	40x4
MC 112	250	45	180	145	14	55	80	50x5
MC 224	315	65	200	155	18	70	110	70x8

Attachment D available with 2 and 3 holes



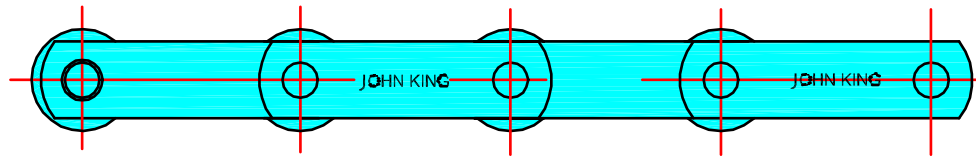
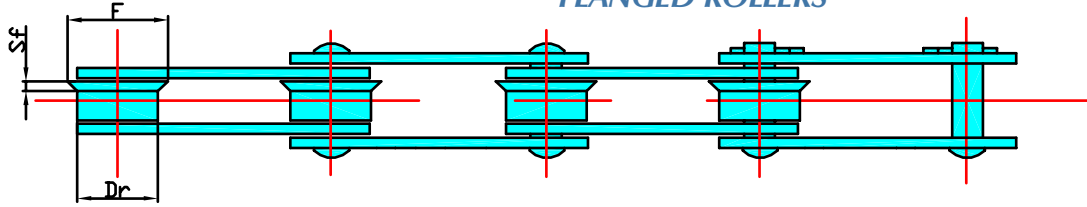
(UK) John King Chains Limited.
New Climax Works, Lancaster Way, Sherburn in Elmet LS25 6NS UK
Telephone: (44) 01977 681910 Facsimile: (44) 01977 681899
E-mail: admin@johnking-chain.com
technical@johnking-chain.com
sales@johnking-chain.com

John King (USA) Inc.
200 Catherine Street, Unit 7B, E. Peoria IL61611 USA
Telephone: 309-698-9250 Facsimile: 309-698-9259
E-mail: salesusa@johnking-chain.com

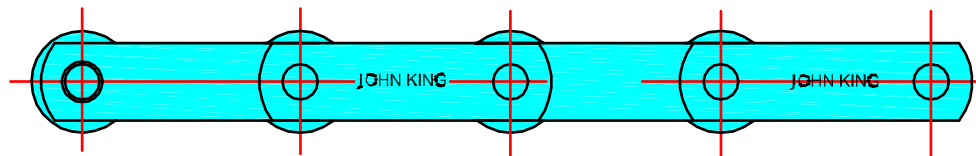
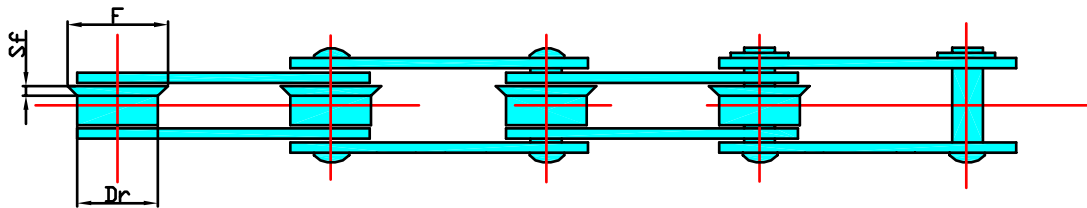
Web: www.johnkingchains.com

CONVEYOR CHAINS

ISO SERIES FLANGED ROLLERS



SOLID PINS



HOLLOW PINS

SOLID PINS

CHAIN N°	Dr mm	F mm	Sf mm
M 40 /.../ F	36	45	4.5
M 80 /.../ F	50	65	6.0
M 112 /.../ F	60	70	7.0
M 160 /.../ F	70	90	8.5
M 224 /.../ F	85	100	10.0
M 315 /.../ F	100	125	12.0

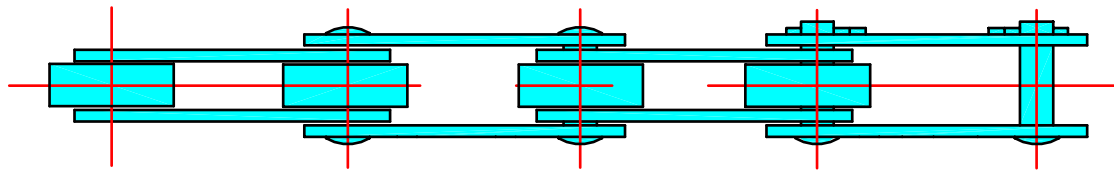
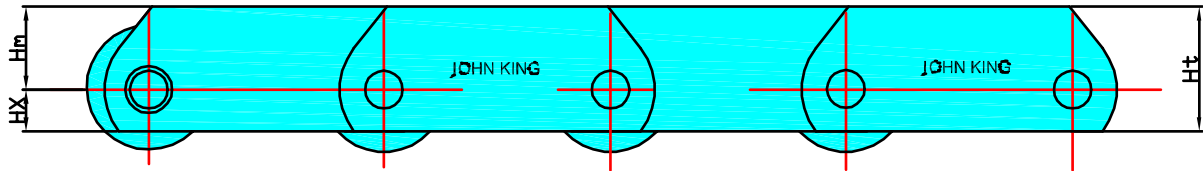
HOLLOW PINS

CHAIN N°	Dr mm	F mm	Sf mm
MC 28 /.../ F	36	45	4.5
MC 56 /.../ F	50	60	5.0
MC 112 /.../ F	70	85	7.0
MC 224 /.../ F	100	120	10.0

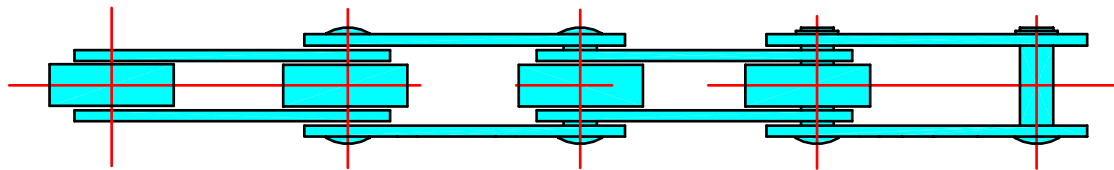
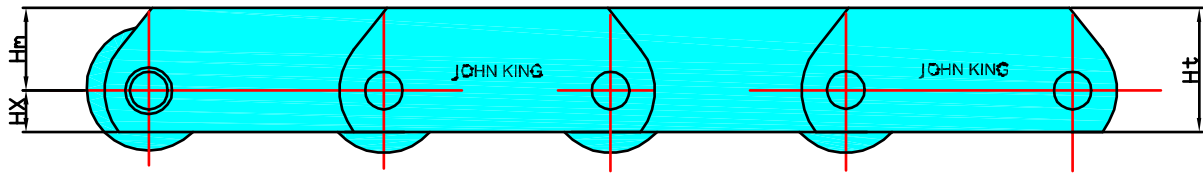


CONVEYOR CHAINS

ISO SERIES DEEP SIDEPLATE



SOLID PINS



HOLLOW PINS

SOLID PINS

CHAIN N°	Hm mm	HX mm	Ht mm
M 40	22.5	12.5	35
M 80	32.5	17.5	50
M 112	40.0	20.0	60
M 160	45.0	25.0	70
M 224	60.0	30.0	90
M 135	65.0	35.0	100

HOLLOW PINS

CHAIN N°	Hm mm	HX mm	Ht mm
MC 28	22.5	12.5	35
MC 56	32.5	17.5	50
MC 112	45.0	25.0	70
MC 224	65.0	35.0	100



(UK) John King Chains Limited.
New Climax Works, Lancaster Way, Sherburn in Elmet LS25 6NS UK
Telephone: (44) 01977 681910 Facsimile: (44) 01977 681899
E-mail: admin@johnking-chain.com
technical@johnking-chain.com
sales@johnking-chain.com

John King (USA) Inc.
200 Catherine Street, Unit 7B, E. Peoria IL61611 USA
Telephone: 309-698-9250 Facsimile: 309-698-9259
E-mail: salesusa@johnking-chain.com

Web: www.johnkingchains.com