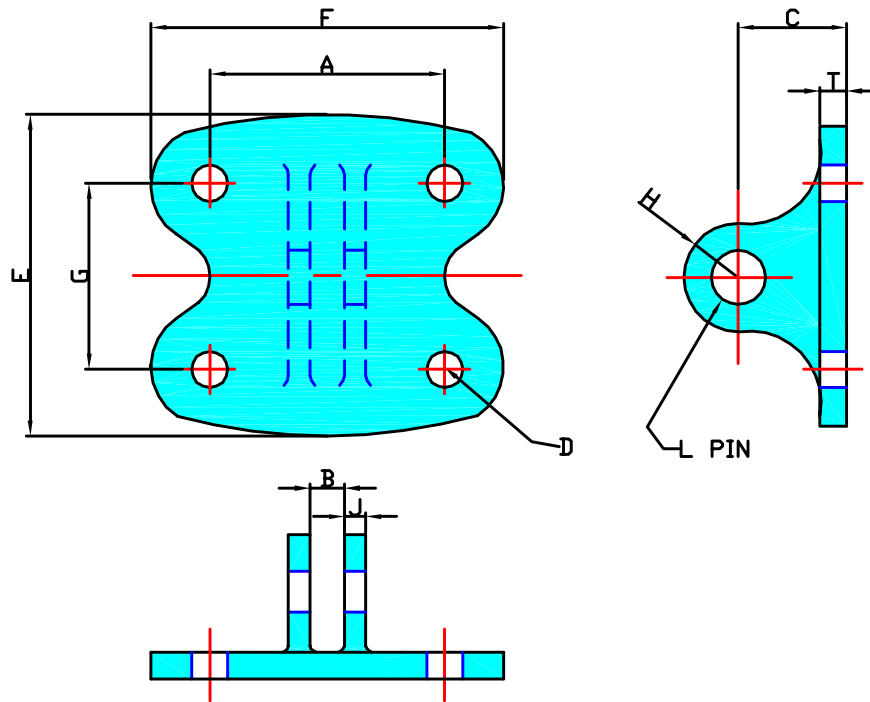


SWIVEL CHAINS

BRITISH PATTERN



CHAIN N°	A		B		C		D		E		F		G		H		J		L		T	
	in	mm	in	mm	in	mm	in	mm	in	mm	in	mm	in	mm	in	mm	in	mm	in	mm	in	mm
578	2 ¹ / ₈	54	7 ¹ / ₁₆	11	1	25	3 ⁷ / ₈	10	2 ⁵ / ₈	66	2 ¹³ / ₁₆	72	1 ⁹ / ₁₆	40	1/2	12	9 ⁹ / ₃₂	7	1/2	12	5 ¹ / ₁₆	8
578	2 ³ / ₁₆	56	9 ¹ / ₁₆	14	1 ¹ / ₈	28	3 ⁷ / ₈	10	3 ¹ / ₂	89	3 ¹ / ₂	89	1 ¹ / ₈	41	1/2	12	9 ⁹ / ₃₂	7	1/2	12	1/4	6
503	2 ¹ / ₂	63	1/2	12	1 ¹ / ₁₆	27	3 ⁷ / ₈	10	3 ¹ / ₂	89	3 ¹ / ₂	89	2 ¹ / ₈	54	9 ¹ / ₁₆	14	1/4	6	1/2	12	1/4	6
C110	2 ³ / ₄	70	9 ¹ / ₁₆	14	1 ¹ / ₂	38	1/2	12	3	76	4	102	1 ¹ / ₄	44	3/4	19	5 ¹ / ₁₆	8	3/4	19	1/4	6
C131	3 ¹ / ₂	89	1 ¹ / ₂	38	1 ⁵ / ₁₆	24	3 ⁷ / ₈	10	3 ³ / ₈	86	4 ⁷ / ₈	124	2	51	1 ¹ / ₁₆	18	7 ¹ / ₁₆	11	1/2	12	5 ¹ / ₁₆	8
C188	2 ¹ / ₈	54	7 ¹ / ₁₆	11	1 ¹ / ₁₆	25	3 ⁷ / ₈	10	2 ⁵ / ₈	66	2 ¹³ / ₁₆	72	1 ⁹ / ₁₆	40	1/2	12	9 ⁹ / ₃₂	7	1/2	12	1 ⁵ / ₁₆	8
C188	2 ³ / ₁₆	56	9 ¹ / ₁₆	14	1 ¹ / ₄	28	3 ⁷ / ₈	10	3 ¹ / ₂	89	3 ¹ / ₂	89	1 ¹ / ₈	41	1/2	12	9 ⁹ / ₃₂	7	1/2	12	1/4	6



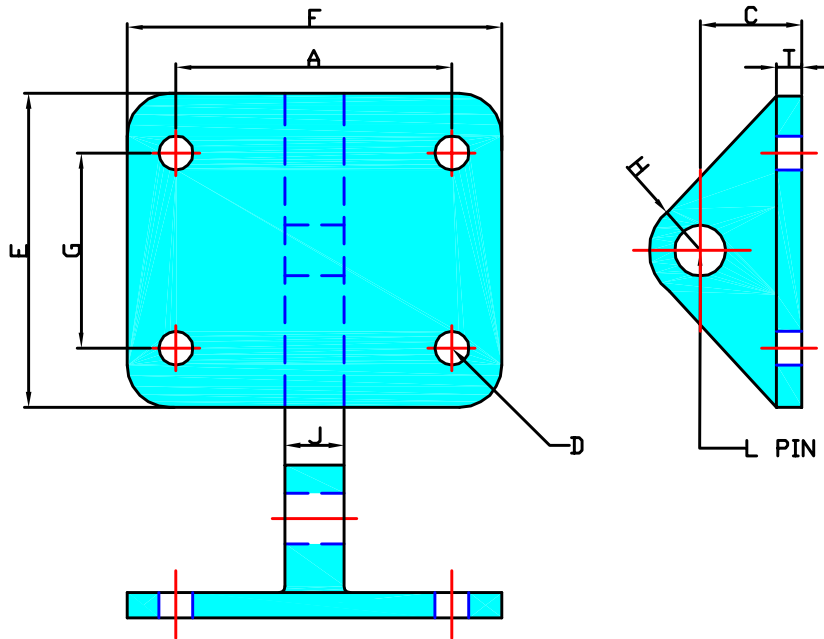
(UK) John King Chains Limited.
 New Climax Works, Lancaster Way, Sherburn in Elmet LS25 6NS UK
 Telephone: (44) 01977 681910 Facsimile: (44) 01977 681899
 E-mail: admin@johnking-chain.com
 technical@johnking-chain.com
 sales@johnking-chain.com

John King (USA) Inc.
 200 Catherine Street, Unit 7B, E. Peoria IL61611 USA
 Telephone: 309-698-9250 Facsimile: 309-698-9259
 E-mail: salesusa@johnking-chain.com

Web: www.johnkingchains.com

SWIVEL CHAINS

BRITISH PATTERN



CHAIN N°	A		C		D		E		F		G		H		J		L		T	
	in	mm	in	mm	in	mm	in	mm	in	mm	in	mm	in	mm	in	mm	in	mm	in	mm
C131	3½	89	¼	32	7/16	11	3¾	95	4¾	121	2½	63	5/8	16	¾	19	½	12	5/16	8



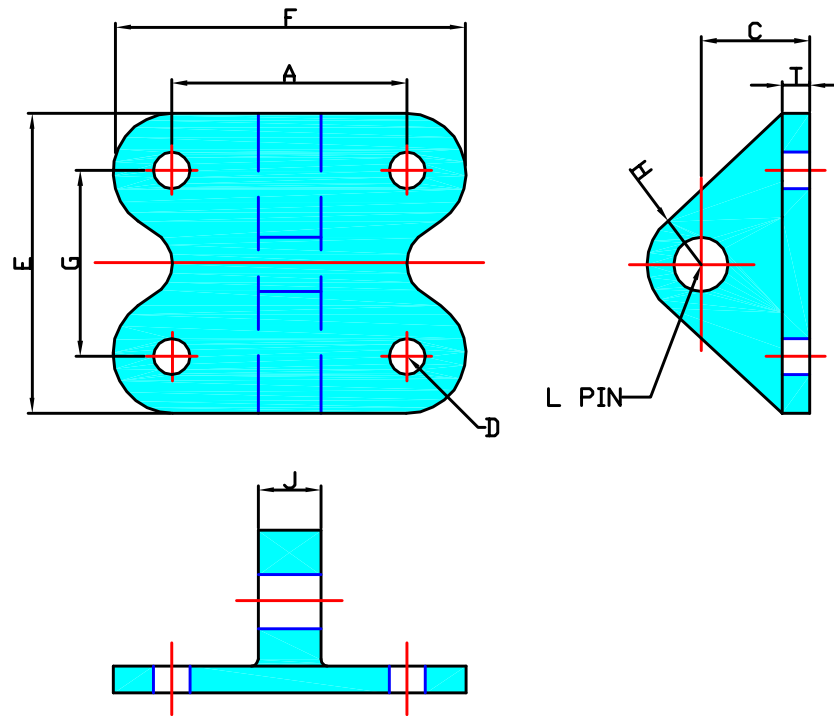
(UK) John King Chains Limited.
 New Climax Works, Lancaster Way, Sherburn in Elmet LS25 6NS UK
 Telephone: (44) 01977 681910 Facsimile: (44) 01977 681899
 E-mail: admin@johnking-chain.com
 technical@johnking-chain.com
 sales@johnking-chain.com

John King (USA) Inc.
 200 Catherine Street, Unit 7B, E. Peoria IL61611 USA
 Telephone: 309-698-9250 Facsimile: 309-698-9259
 E-mail: salesusa@johnking-chain.com

Web: www.johnkingchains.com

SWIVEL CHAINS

BRITISH PATTERN



CHAIN N°	A		C		D		E		F		G		H		J		L		T	
	in	mm	in	mm	in	mm	in	mm	in	mm	in	mm	in	mm	in	mm	in	mm	in	mm
C131	2 ⁵ / ₁₆	58	1 ¹ / ₈	28	3 ³ / ₈	10	3	76	3 ⁵ / ₈	92	1 ⁵ / ₈	41	5 ⁵ / ₈	16	3 ³ / ₄	19	1 ¹ / ₂	12	5 ⁵ / ₁₆	8



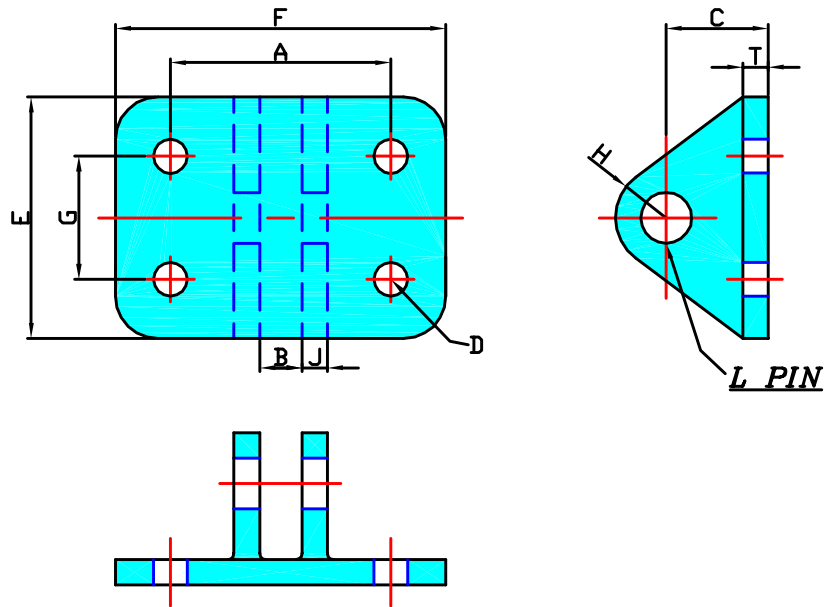
(UK) John King Chains Limited.
 New Climax Works, Lancaster Way, Sherburn in Elmet LS25 6NS UK
 Telephone: (44) 01977 681910 Facsimile: (44) 01977 681899
 E-mail: admin@johnking-chain.com
 technical@johnking-chain.com
 sales@johnking-chain.com

John King (USA) Inc.
 200 Catherine Street, Unit 7B, E. Peoria IL61611 USA
 Telephone: 309-698-9250 Facsimile: 309-698-9259
 E-mail: salesusa@johnking-chain.com

Web: www.johnkingchains.com

SWIVEL CHAINS

BRITISH PATTERN



CHAIN N°	A		B		C		D		E		F		G		H		J		L		T	
	in	mm	in	mm	in	mm	in	mm	in	mm	in	mm	in	mm	in	mm	in	mm	in	mm	in	mm
C134	2/16	52	19/32	10	15/16	24	5/16	8	2/4	57	3/16	78	1/8	29	1/2	12	1/4	6	1/2	12	1/4	6



(UK) John King Chains Limited.
 New Climax Works, Lancaster Way, Sherburn in Elmet LS25 6NS UK
 Telephone: (44) 01977 681910 Facsimile: (44) 01977 681899
 E-mail: admin@johnking-chain.com
technical@johnking-chain.com
sales@johnking-chain.com

John King (USA) Inc.
 200 Catherine Street, Unit 7B, E. Peoria IL61611 USA
 Telephone: 309-698-9250 Facsimile: 309-698-9259
 E-mail: salesusa@johnking-chain.com

Web: www.johnkingchains.com