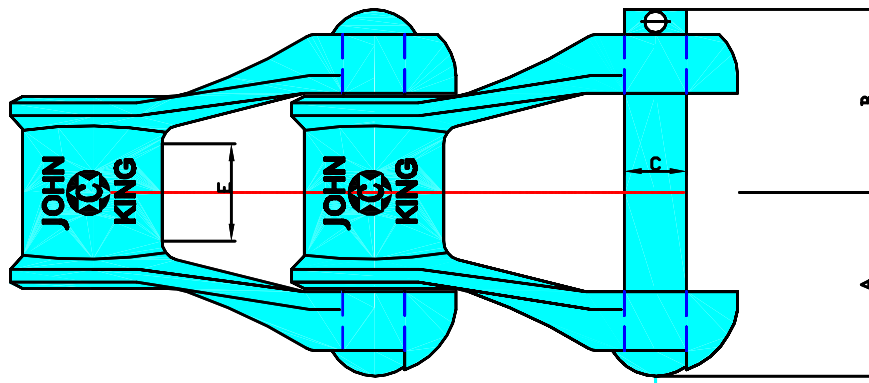
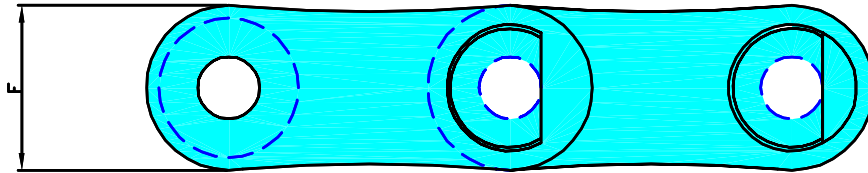


PINTLE CHAINS

BRITISH PATTERN



TRAVEL →

CHAIN N ^o	APPROX PITCH		A		B		C		E		F		No OF LINKS IN 10ft	ULTIMATE STRENGTH		NET WEIGHT	
	in	mm	in	mm	in	mm	in	mm	in	mm	in	mm		lb	kg	lb/ft	kg/m
133	1.38	35	1 ³ / ₁₆	21	5 ¹ / ₁₆	24	1 ¹ / ₄	6	1 ¹ / ₂	12	1 ¹ / ₁₆	17	87	4000	1810	1.3	1.94
152	1.38	35	1 ⁵ / ₁₆	24	1 ¹ / ₈	29	5 ⁵ / ₁₆	8	1 ¹ / ₂	12	3 ³ / ₄	19	87	6500	2960	1.6	2.39
170	1.75	44.5	1 ³ / ₁₆	30	1 ¹ / ₄	32	3 ³ / ₈	10	9 ⁹ / ₁₆	15	1 ⁵ / ₁₆	24	69	10000	4550	2.8	4.17



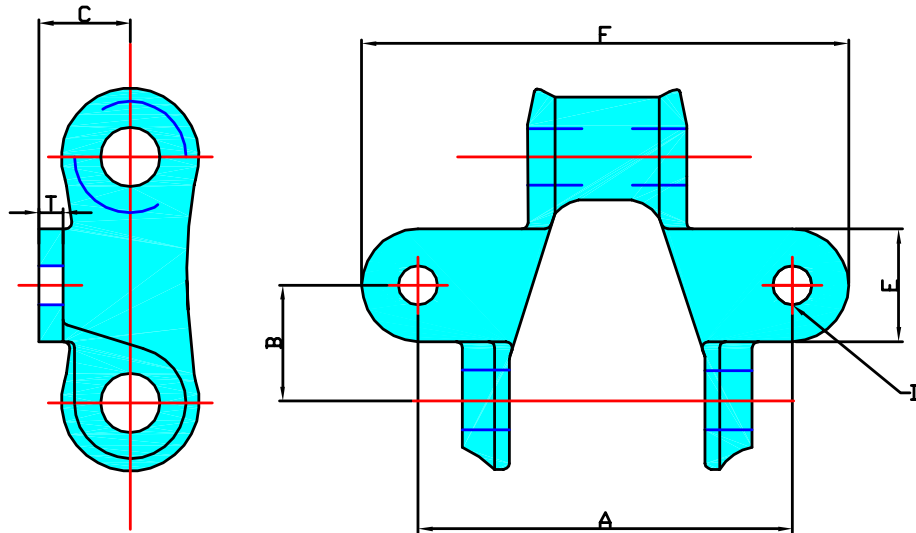
(UK) John King Chains Limited.
 New Climax Works, Lancaster Way, Sherburn in Elmet LS25 6NS UK
 Telephone: (44) 01977 681910 Facsimile: (44) 01977 681899
 E-mail: admin@johnking-chain.com
 technical@johnking-chain.com
 sales@johnking-chain.com

John King (USA) Inc.
 200 Catherine Street, Unit 7B, E. Peoria IL61611 USA
 Telephone: 309-698-9250 Facsimile: 309-698-9259
 E-mail: salesusa@johnking-chain.com

Web: www.johnkingchains.com

PINTLE CHAINS

BRITISH PATTERN



TYPE K1

CHAIN N ^o	A		B		C		∅D		E		F		T	
	in	mm	in	mm	in	mm	in	mm	in	mm	in	mm	in	mm
133	2 ¹ / ₁₆	52	1 ¹ / ₁₆	17	7 ¹ / ₁₆	11	1/4	6	3/4	19	3	76	1/8	3
152	2	51	5/8	16	3/8	10	1/4 ○	6	3/4	19	3	76	5/32	4
170	2 ³ / ₈	60	7/8	22	3/4	19	5/16	8	15/16	24	3 ³ / ₈	85	3/16	5

○ Denotes round holes



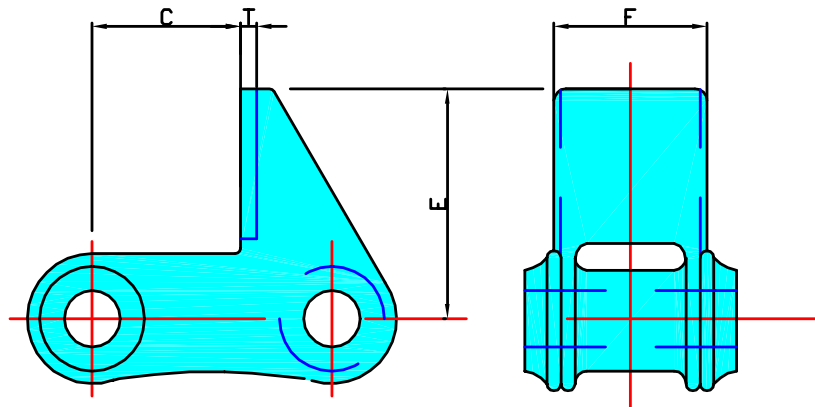
(UK) John King Chains Limited.
 New Climax Works, Lancaster Way, Sherburn in Elmet LS25 6NS UK
 Telephone: (44) 01977 681910 Facsimile: (44) 01977 681899
 E-mail: admin@johnking-chain.com
 technical@johnking-chain.com
 sales@johnking-chain.com

John King (USA) Inc.
 200 Catherine Street, Unit 7B, E. Peoria IL61611 USA
 Telephone: 309-698-9250 Facsimile: 309-698-9259
 E-mail: salesusa@johnking-chain.com

Web: www.johnkingchains.com

PINTLE CHAINS

BRITISH PATTERN



TYPE C3

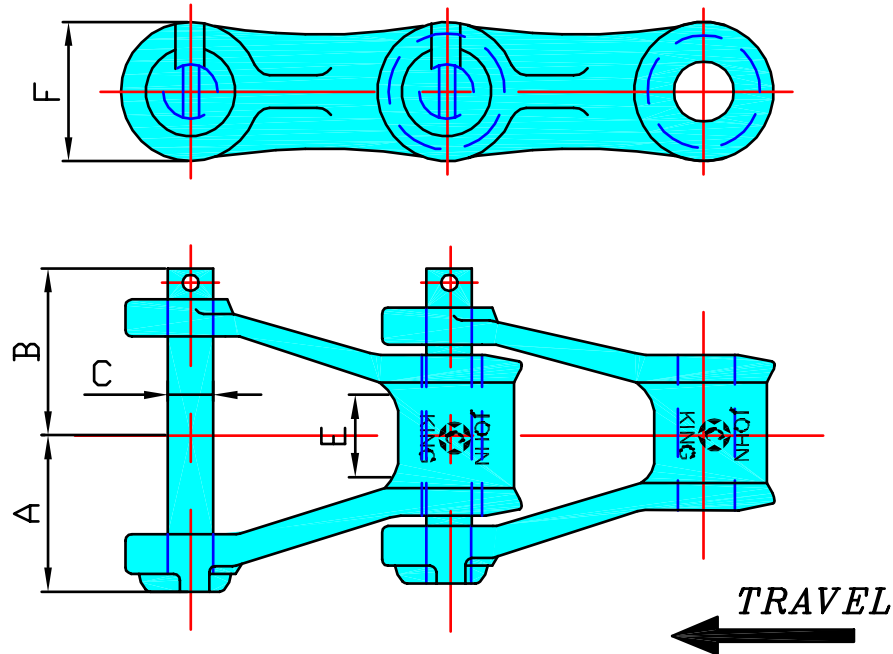
CHAIN N ^o	C		E		F		T	
	in	mm	in	mm	in	mm	in	mm
133	9/16	14	11/16	43	1	25	1/8	3
170*	1/8	28	23/8	60	13/16	30	3/16	5

* Designated C9, within limits these attachments



PINTLE CHAINS

AMERICAN PATTERN 400 CLASS

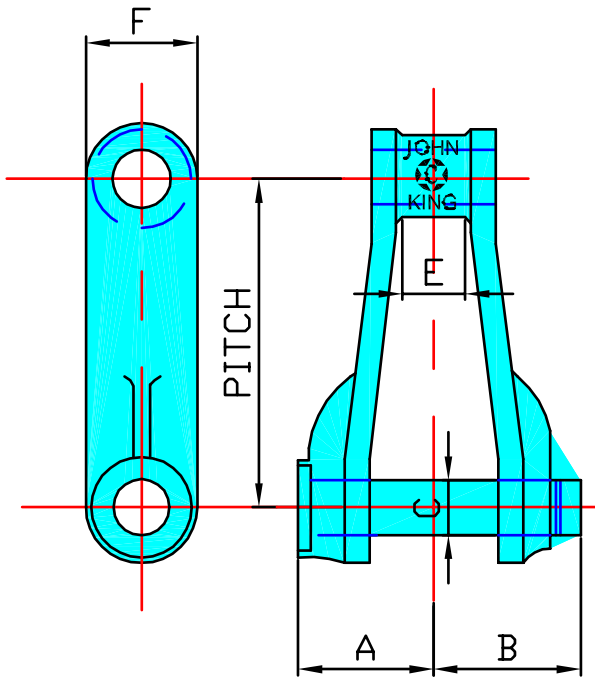


CHAIN N°	APPROX PITCH	A	B	C	E	F	No OF LINKS IN 10ft	ULTIMATE STRENGTH	NET WEIGHT
								lb	lb/ft
442	1.375	$27/32$	$15/32$	$5/16$	$5/8$	$3/4$	88	6000	1.4
445	1.630	$15/16$	$1/16$	$5/16$	$11/16$	$3/4$	74	6000	1.5
452	1.506	$1/32$	$15/32$	$3/8$	$5/8$	$27/32$	80	7000	2.0
455	1.630	$1/32$	$15/32$	$3/8$	$11/16$	$27/32$	74	7300	1.9
462	1.634	$13/16$	$15/16$	$7/16$	$7/8$	$15/16$	73	9000	2.5
477	2.308	$1/8$	$1/4$	$7/16$	$11/16$	1	52	9600	2.0
488	2.609	$13/8$	$1/2$	$7/16$	$15/16$	$15/16$	46	11000	2.9
4103	3.075	$15/8$	$17/8$	$3/4$	$1/8$	$1/2$	39	22000	5.7
4124	4.063	$2^{11}/64$	$2^{27}/64$	$3/8$	$1/4$	$15/16$	30	33000	8.5

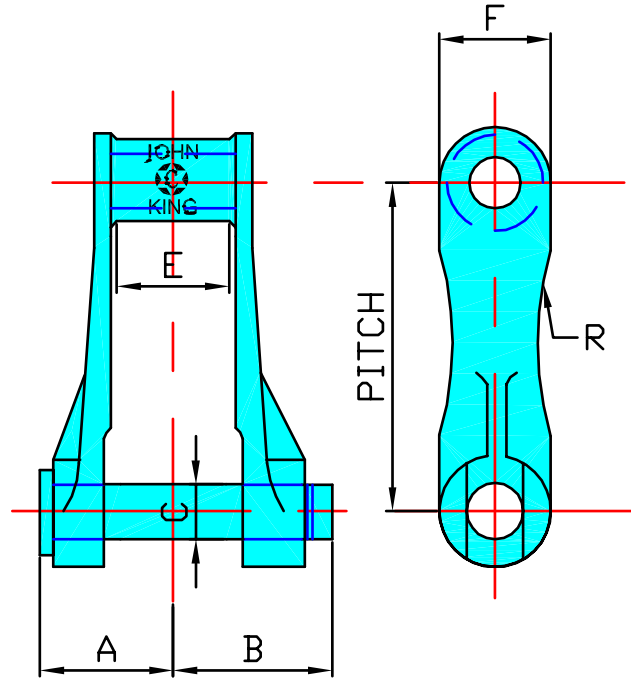


PINTLE CHAINS

AMERICAN PATTERN 700 CLASS



720 720S
STRAIGHT SIDE BAR TYPE



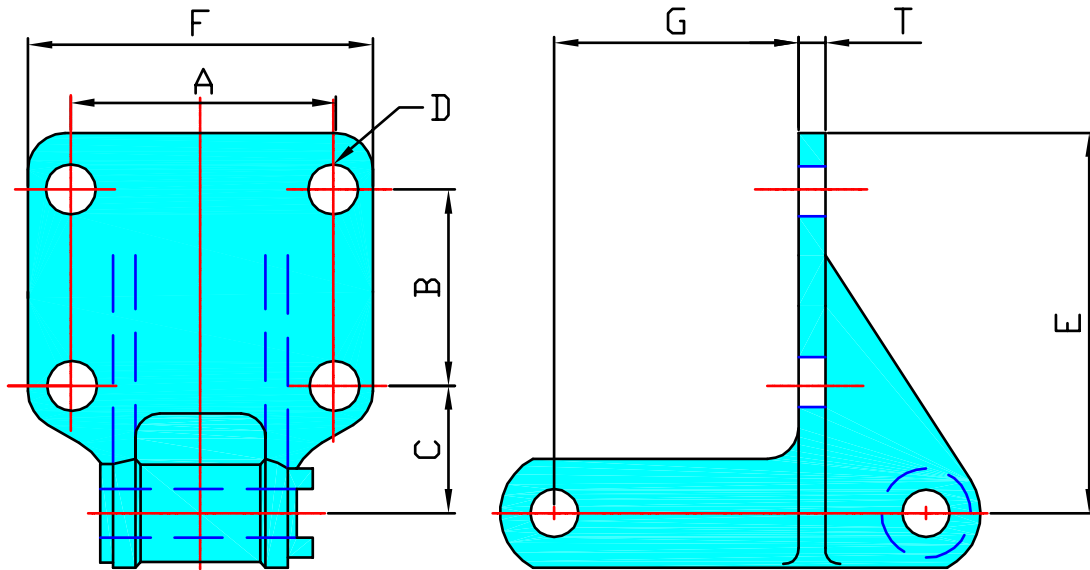
720SC
CURVED SIDE BAR TYPE

CHAIN N°	APPROX PITCH	A	B	C	E	F	R	No OF LINKS IN 10ft	AVERAGE ULTIMATE STRENGTH lb	NET WEIGHT lb/ft
720	6.00	1.69	1.81	.69	1.13	1.5	—	20	22000	4.2
720S	6.00	2	2	.75	1.13	1.56	—	20	30000	5.1
720SC	6.00	1.69	2.56	.75	1.13	1.59	10	20	30000	6.0



PINTLE CHAINS

AMERICAN PATTERN 700 CLASS F3 F22-6 / F22-8 ATTACHMENTS



ATTACH NO.	CHAIN N ^o	A	B	C	D	E	F	G	T	NET WEIGHT lb/ft
F3	720SC	3.75	2.5	2.38	0.5	5.5	5	3	0.22	10.8
F22-6	720	3.75	2.63	2.38	.38	6.13	5.5	3	0.31	11.8
	720S	3.75	2.63	2.38	.38	6.13	5.38	3	0.31	13.3
	720SC	3.75	2.63	2.38	.38	6.13	5.63	3	0.31	14.0
F22-8	720	3.75	4.5	2.38	.38	8.13	5.5	3	0.31	14.0
	720S	3.75	4.5	2.38	.38	8.13	5.5	3	0.31	19.3
	720SC	3.75	4.5	2.38	.38	8.13	5.63	3	0.31	15.6



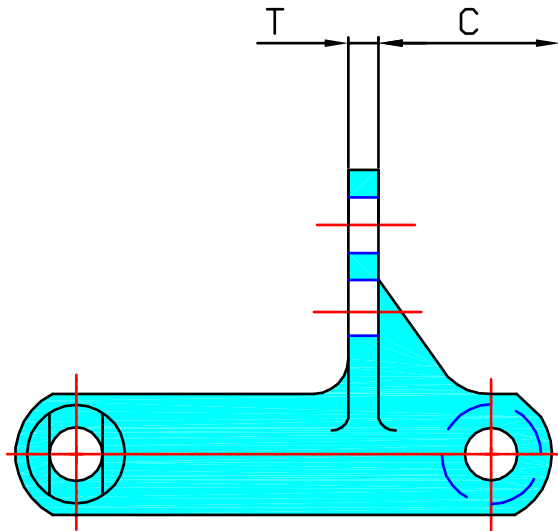
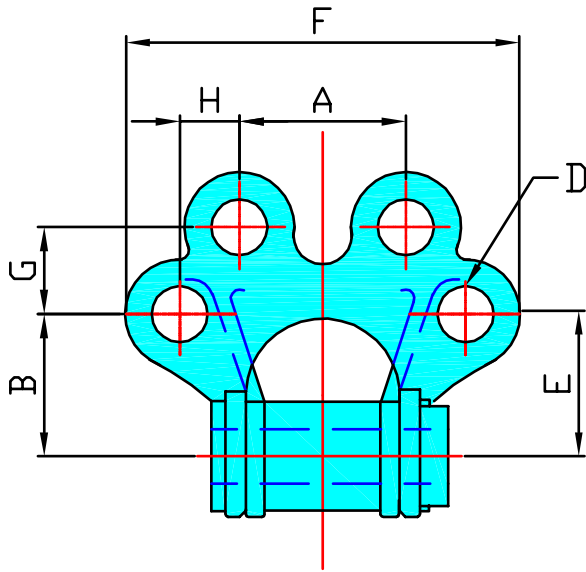
(UK) John King Chains Limited.
New Climax Works, Lancaster Way, Sherburn in Elmet LS25 6NS UK
Telephone: (44) 01977 681910 Facsimile: (44) 01977 681899
E-mail: admin@johnking-chain.com
technical@johnking-chain.com
sales@johnking-chain.com

John King (USA) Inc.
200 Catherine Street, Unit 7B, E. Peoria IL61611 USA
Telephone: 309-698-9250 Facsimile: 309-698-9259
E-mail: salesusa@johnking-chain.com

Web: www.johnkingchains.com

PINTLE CHAINS

AMERICAN PATTERN 700 CLASS F2 ATTACHMENT

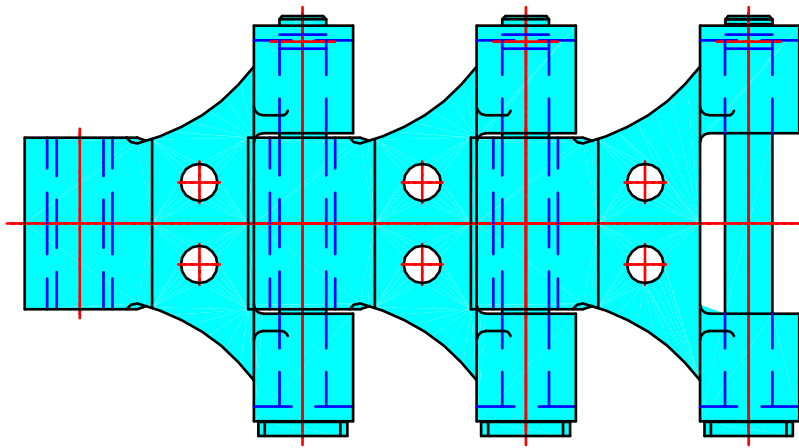
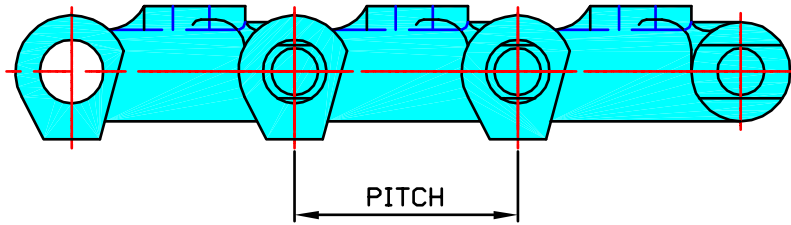


ATTACH NO.	CHAIN N°	A	B	C	D	E	F	G	H	T	NET WEIGHT lb/ft
F2	720	1.94	2	3	0.5	3.81	5.31	1.31	1.16	0.25	6.4
	720SC	1.94	2	3	0.38	3.81	5.31	1.31	1.16	0.25	6.9

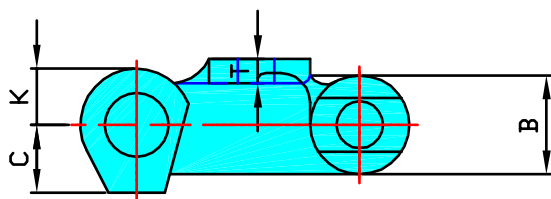


PINTLE CHAINS

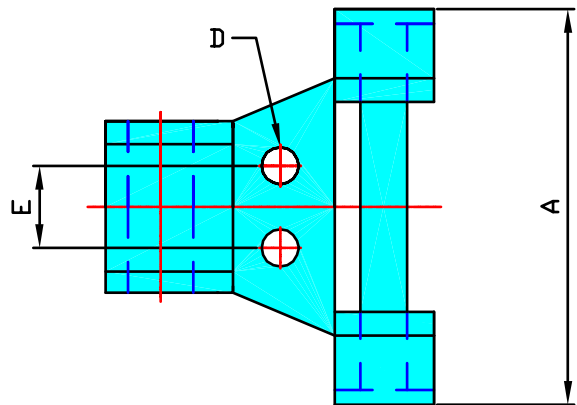
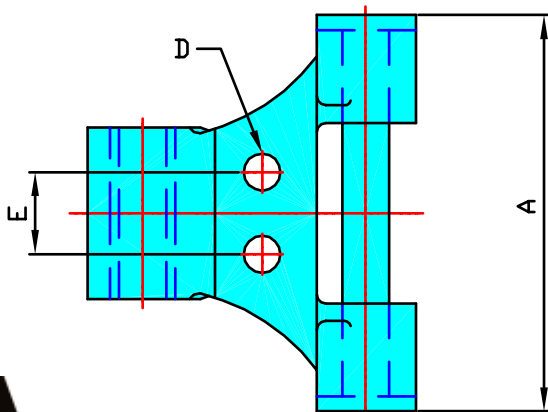
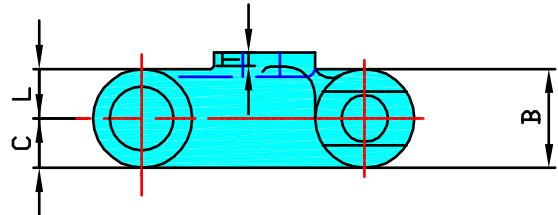
AMERICAN PATTERN 900 CLASS SUGAR CARRIER



TYPE A



TYPE B



PINTLE CHAINS

AMERICAN PATTERN 900 CLASS SUGAR CARRIER

All Strengths, Weights and Loads in Pounds

CHAIN N°	PITCH		RATED WORKING LOAD	MIN ULTIMATE STRENGTH	AVERAGE WEIGHT PER FOOT	A		B		C		D		E	
	in	mm				in	mm	in	mm	in	mm	in	mm	in	mm
JK5174	2.36	59.9	22,500	11.7	51	5.5	139.7	1.125	28.6	0.75	19	0.375	12.7	1	25.4
901	3.15	80.01	25,000	11.6	38	5.5	139.7	1.34	34.1	0.81	20.6	0.5	16	1.09	27.7
902	2.97	75.4	25,000	12.0	40	5.55	140.9	1.34	34.1	0.88	22.2	0.375	16	1.09	27.7
907	3.17	80.5	25,000	11.6	38	5.55	140.9	1.4	35.7	0.72	18.3	-	-	1.09	27.7

K		L		T		TYPE
in	mm	in	mm	in	mm	
0.66	16.7	0.88	-	-	0.31	A
1.5	-	-	0.94	1.25	0.375	B
1.5	-	-	0.94	1.00	0.375	B
1.5	-	-	0.94	1.25	0.375	B

- NOTES;- 1. Type B is without bush
2. Links are also available in stainless steel

