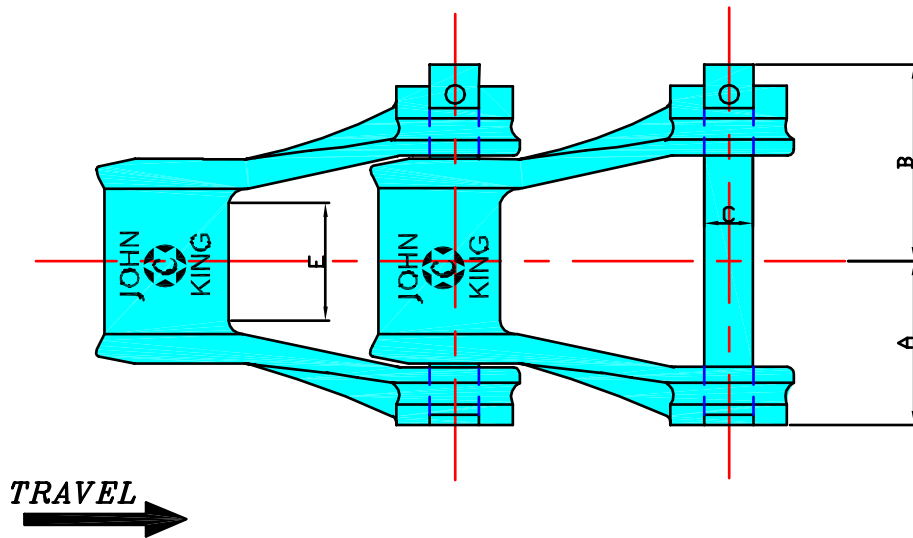
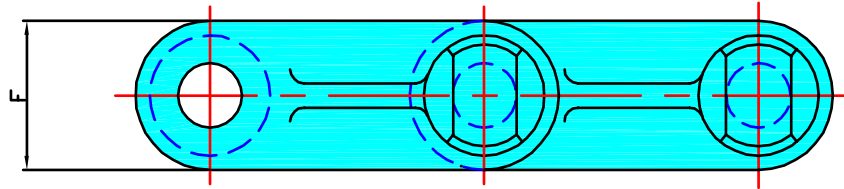


GRAY PIN CHAINS

BRITISH PATTERN



CHAIN N°	APPROX PITCH		A		B		C		E		F		No OF LINKS IN 10ft	ULTIMATE STRENGTH		NET WEIGHT	
	in	mm	in	mm	in	mm	in	mm	in	mm	in	mm		lb	kg	lb/ft	kg/m
500	6.04	153.5	2 ⁵ / ₈	67	3	76	5/8	16	1 ⁵ / ₈	41	1 ¹ / ₂	38	20	25000	11400	6.0	8.95
503	3.02	77	2	51	2 ¹ / ₄	57	9/16	14	1 ¹ / ₈	29	1 ³ / ₈	33	40	20000	9100	6.2	9.25
504	4.06	103	2 ³ / ₄	70	2 ⁷ / ₈	73	5/8	16	1 ⁵ / ₈	41	1 ¹ / ₈	40	30	27500	12400	8.5	12.66
567	2.32	59	1 ¹ / ₂	38	1 ¹ / ₁₆	43	3/8	10	7/8	23	1 ¹ / ₁₆	27	52	12500	5700	3.5	5.22
578	2.63	67	1 ⁹ / ₁₆	40	1 ¹ / ₁₆	43	7/16	11	1	25	1 ¹ / ₁₆	27	46	15000	6800	4.0	5.96



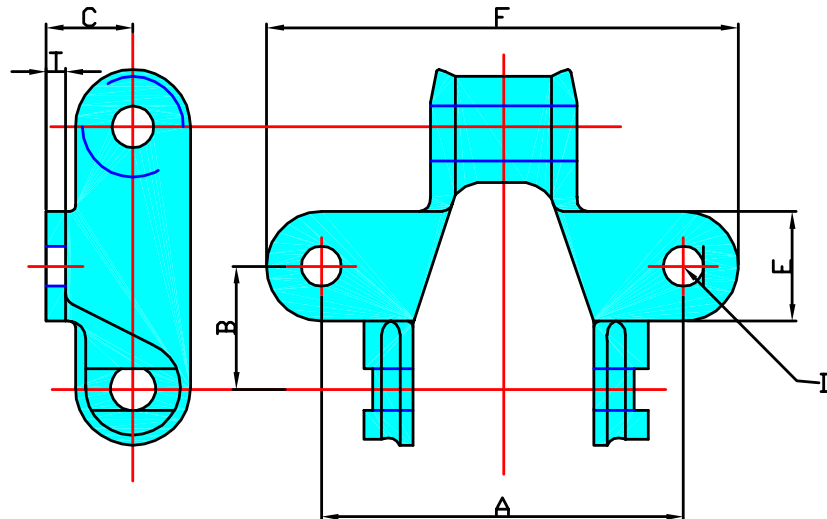
(UK) John King Chains Limited.
 New Climax Works, Lancaster Way, Sherburn in Elmet LS25 6NS UK
 Telephone: (44) 01977 681910 Facsimile: (44) 01977 681899
 E-mail: admin@johnking-chain.com
 technical@johnking-chain.com
 sales@johnking-chain.com

John King (USA) Inc.
 200 Catherine Street, Unit 7B, E. Peoria IL61611 USA
 Telephone: 309-698-9250 Facsimile: 309-698-9259
 E-mail: salesusa@johnking-chain.com

Web: www.johnkingchains.com

GRAY PIN CHAINS

BRITISH PATTERN ATTACHMENT



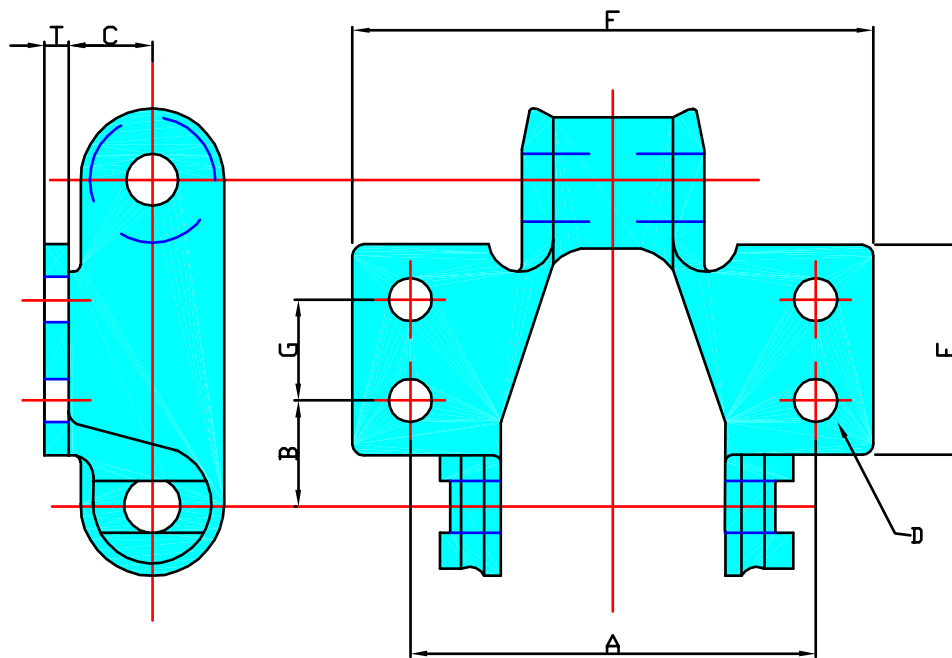
TYPE K1

CHAIN N ^o	A		B		C		D		E		F		T	
	in	mm	in	mm	in	mm	in	mm	in	mm	in	mm	in	mm
503	4 ⁷ / ₁₆	113	1 ¹ / ₂	38	7 ⁷ / ₈	22	7 ⁷ / ₁₆	11	1 ¹ / ₂	38	5 ¹¹ / ₁₆	145	5 ⁵ / ₁₆	8
504	6	152	2	51	1 ⁵ / ₁₆	24	1 ¹ / ₂	12	1 ¹¹ / ₁₆	43	7 ¹ / ₄	184	3 ³ / ₈	10
567	3 ³ / ₈	98	1 ³ / ₁₆	30	3 ³ / ₄	19	3 ³ / ₈	10	1 ¹ / ₄	31	5 ¹ / ₈	130	5 ⁵ / ₁₆	8
578	3 ³ / ₄	95	1 ³ / ₈	35	3 ³ / ₄	19	3 ³ / ₈	10	1 ³ / ₁₆	30	5	127	5 ⁵ / ₁₆	8



GRAY PIN CHAINS

BRITISH PATTERN ATTACHMENT



TYPE K2

CHAIN N°	A		B		C		D		E		F		G	
	in	mm	in	mm	in	mm	in	mm	in	mm	in	mm	in	mm
503	5 ³ / ₈	137	7/ ₈	22	7/ ₈	22	7/ ₁₆	11	2 ⁷ / ₈	73	7	178	1 ¹³ / ₁₆	46
504	5 ¹³ / ₁₆	148	1 ⁵ / ₁₆	33	7/ ₈	24	1/2	12	2 ¹ / ₂	64	6 ³ / ₄	172	1 ¹ / ₂	38
567	3 ⁷ / ₈	98	5/ ₈	16	3/ ₄	19	3/ ₈	10	1 ¹³ / ₁₆	46	5/ ₈	130	1	25
578	4	102	1 ⁵ / ₁₆	24	3/ ₄	19	3/ ₈	10	2 ¹ / ₁₆	52	5/ ₈	130	1	25



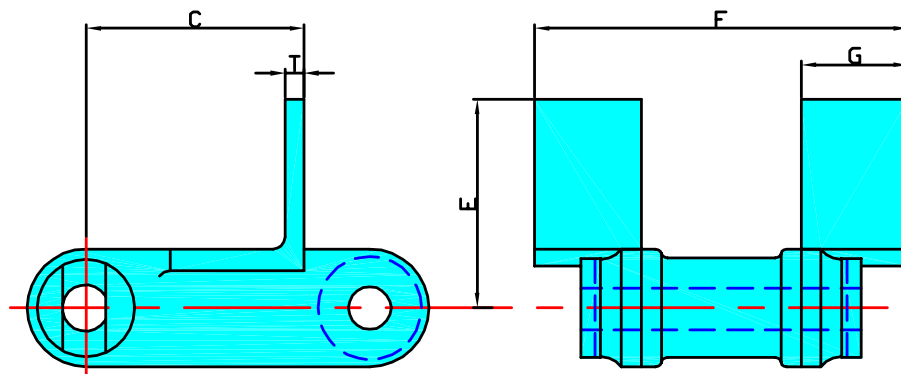
(UK) John King Chains Limited.
 New Climax Works, Lancaster Way, Sherburn in Elmet LS25 6NS UK
 Telephone: (44) 01977 681910 Facsimile: (44) 01977 681899
 E-mail: admin@johnking-chain.com
 technical@johnking-chain.com
 sales@johnking-chain.com

John King (USA) Inc.
 200 Catherine Street, Unit 7B, E. Peoria IL61611 USA
 Telephone: 309-698-9250 Facsimile: 309-698-9259
 E-mail: salesusa@johnking-chain.com

Web: www.johnkingchains.com

GRAY PIN CHAINS

BRITISH PATTERN ATTACHMENT



TYPE F1

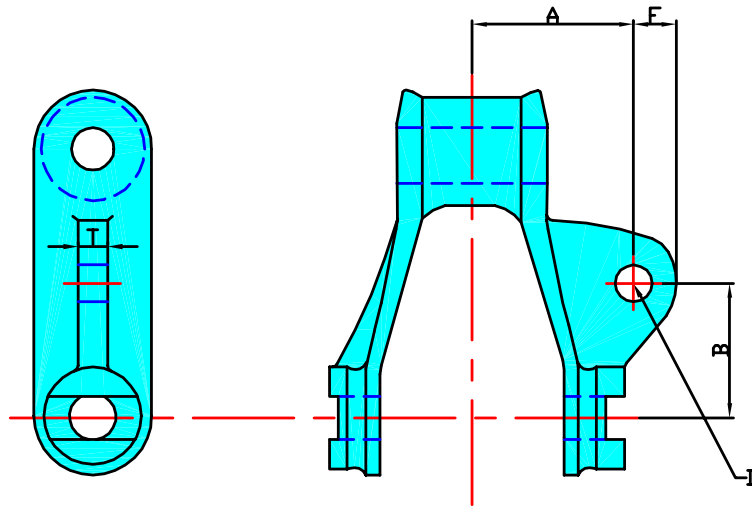
CHAIN N°	C		E		F		G		T	
	in	mm	in	mm	in	mm	in	mm	in	mm
500	4 $\frac{1}{4}$	108	2 $\frac{3}{8}$	60	7 $\frac{1}{4}$	184	2 $\frac{3}{8}$	60	$\frac{1}{4}$	6
503	2 $\frac{7}{16}$	62	2 $\frac{11}{16}$	68	4	101	1 $\frac{1}{4}$	31	$\frac{1}{2}$	12
567	1 $\frac{3}{4}$	48	2 $\frac{1}{8}$	54	3 $\frac{1}{8}$	80	1	25	$\frac{1}{4}$	6
578	2	51	2 $\frac{1}{4}$	57	3 $\frac{5}{8}$	92	1 $\frac{1}{8}$	29	$\frac{1}{4}$	6

Within Limits these attachments can be drilled to suit customers requirements



GRAY PIN CHAINS

BRITISH PATTERN ATTACHMENT



TYPE A42

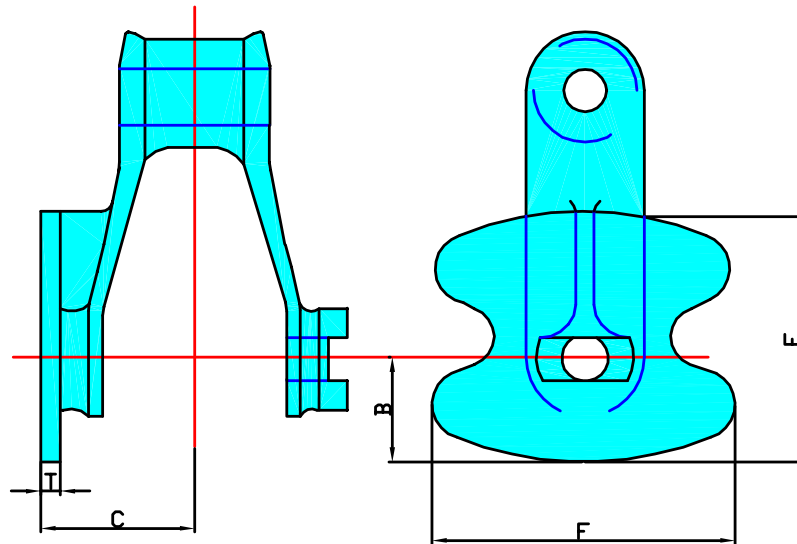
CHAIN N ^o	A		B		øD		F		T	
	in	mm	in	mm	in	mm	in	mm	in	mm
503	2	51	1½	38	9/16	14	11/16	18	3/8	10
578*	1¾	45	1⅛	29	½	12	5/8	16	3/8	10

*Designated AS20



GRAY PIN CHAINS

BRITISH PATTERN ATTACHMENT



TYPE G20

CHAIN N°	B		C		E		F		T	
	in	mm	in	mm	in	mm	in	mm	in	mm
503	1 ⁵ / ₁₆	33	2 ¹ / ₁₆	52	3	76	3 ⁷ / ₁₆	87	1/4	6
504	1 ¹ / ₂	38	2 ³ / ₄	70	3 ⁹ / ₁₆	90	3 ¹ / ₂	89	3/32	7
567	1 ³ / ₄	45	1 ⁹ / ₁₆	39	2 ¹ / ₁₆	68	3 ¹ / ₄	82	7/32	6
574	1 ¹ / ₂	38	2 ³ / ₁₆	55	3	76	2 ⁷ / ₈	73	7/32	6



(UK) John King Chains Limited.
 New Climax Works, Lancaster Way, Sherburn in Elmet LS25 6NS UK
 Telephone: (44) 01977 681910 Facsimile: (44) 01977 681899
 E-mail: admin@johnking-chain.com
 technical@johnking-chain.com
 sales@johnking-chain.com

John King (USA) Inc.
 200 Catherine Street, Unit 7B, E. Peoria IL61611 USA
 Telephone: 309-698-9250 Facsimile: 309-698-9259
 E-mail: salesusa@johnking-chain.com

Web: www.johnkingchains.com