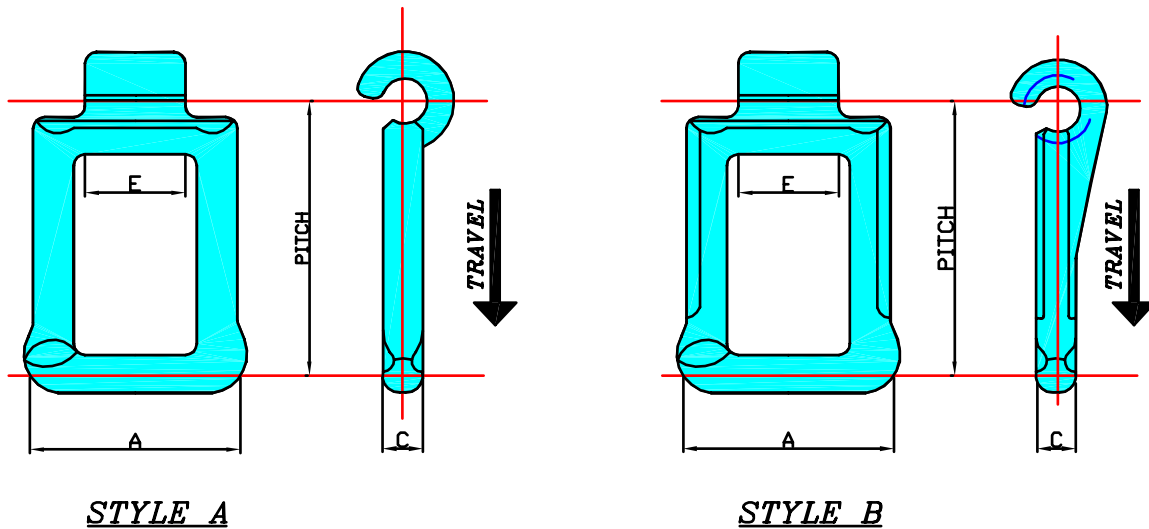


CAST DETACHABLE CHAINS

BRITISH PATTERN



STYLE A

STYLE B

CHAIN N°	STYLE	PITCH		WIDTH A		DIAMETER OF CROSSBAR C		MAXIMUM SPROCKET FACE E		No OF LINKS IN 10ft	AVERAGE ULTIMATE STRENGTH		AVERAGE NET WEIGHT	
		in	mm	in	mm	in	mm	in	mm		lb	kg	lb/ft	kg/m
42	A	1.38	35	1 ³ / ₈	35	1/4	6	5/8	16	87	2000	910	0.72	1.08
46	A	1.61	41	1 ³ / ₈	35	7/32	5.5	1/2	17	75	1500	680	0.57	0.85
48	A	2.03	51.5	1 ³ / ₈	41	15/64	5.6	7/8	23	59	2000	910	0.66	0.98
55	A	1.64	41.7	1 ³ / ₈	35	7/64	6.5	5/8	16	73	2500	1140	1.00	1.51
57	A	2.32	59	2	50	5/16	8	15/16	25	52	3000	1360	1.16	1.74
57S	A	2.40	61	2 ¹ / ₁₆	52	13/32	10.5	15/16	24	50	5000	2275	1.85	2.76
60	A	1.75	44.5	1 ³ / ₄	44	5/16	8	3/4	19	69	3000	1360	1.10	1.64
63	A	3.00	76	2 ⁵ / ₁₆	59	3/8	10	1 ³ / ₁₆	30	40	5000	2275	1.75	2.62
74	A	2.38	60.5	2 ¹ / ₁₆	68	7/16	11	1 ³ / ₁₆	30	51	6000	2730	2.90	4.33
88	B	2.66	67.7	3/4	82	1/2	12	1	26	45	7500	3400	3.70	5.51
101	A	3.55	90.2	4	102	13/32	15	1 ⁵ / ₁₆	41	34	12500	5700	6.20	9.25
103	B	3.02	77	3 ¹ / ₂	89	9/16	14	1 ¹ / ₈	28	40	9000	4100	4.30	6.43



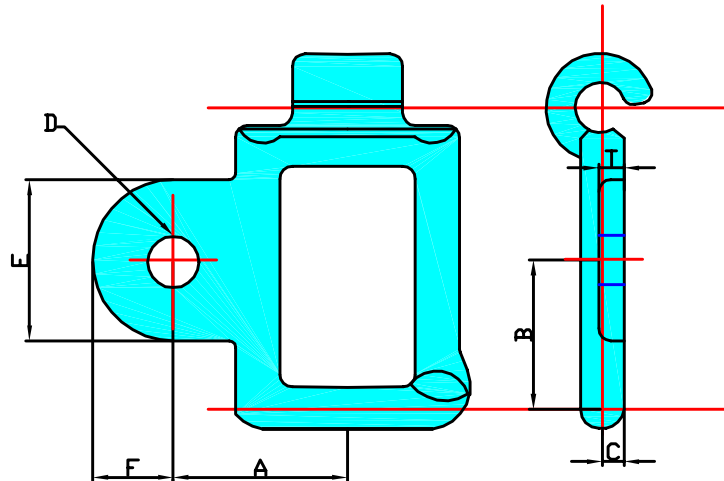
(UK) John King Chains Limited.
 New Climax Works, Lancaster Way, Sherburn in Elmet LS25 6NS UK
 Telephone: (44) 01977 681910 Facsimile: (44) 01977 681899
 E-mail: admin@johnking-chain.com
 technical@johnking-chain.com
 sales@johnking-chain.com

John King (USA) Inc.
 200 Catherine Street, Unit 7B, E. Peoria IL61611 USA
 Telephone: 309-698-9250 Facsimile: 309-698-9259
 E-mail: salesusa@johnking-chain.com

Web: www.johnkingchains.com

CAST DETACHABLE CHAINS

BRITISH PATTERN ATTACHMENTS



TYPE A1

CHAIN N ^o	A		B		C		D		E		F		T	
	in	mm	in	mm	in	mm	in	mm	in	mm	in	mm	in	mm
42	1 ¹ / ₁₆	27	1 ¹ / ₁₆	17	1/8	3	5/16	8	31/32	24	5/8	16	5/32	4
45	1/8	28	7/8	22	7/64	2.5	1/4 ○	6	1 ³ / ₁₆	30	5/8	16	1/8	3
48	1 ⁵ / ₁₆	34	1/8	29	7/64	2.5	5/16	8	1 ³ / ₈	35	5/8	16	5/32	4
55	1 ³ / ₁₆	30	27/32	22	5/32	4	5/16	8	1/8	28	21/32	17	21/32	4
57	1/2	38	1 ³ / ₁₆	30	5/32	4	3/8	10	1 ⁵ / ₈	41	15/16	24	15/16	5
57S	1 ⁹ / ₁₆	40	1 ⁵ / ₁₆	33	7/32	6	5/16	8	1 ⁵ / ₈	41	15/16	24	15/16	7
60	1 ⁵ / ₁₆	33	1 ⁵ / ₁₆	24	5/32	4	5/16	8	1/8	29	9/16	14	9/16	4



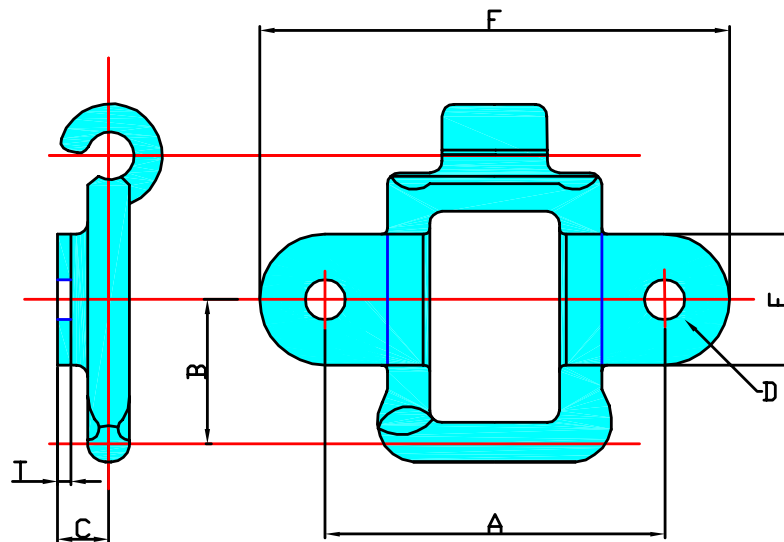
(UK) John King Chains Limited.
 New Climax Works, Lancaster Way, Sherburn in Elmet LS25 6NS UK
 Telephone: (44) 01977 681910 Facsimile: (44) 01977 681899
 E-mail: admin@johnking-chain.com
 technical@johnking-chain.com
 sales@johnking-chain.com

John King (USA) Inc.
 200 Catherine Street, Unit 7B, E. Peoria IL61611 USA
 Telephone: 309-698-9250 Facsimile: 309-698-9259
 E-mail: salesusa@johnking-chain.com

Web: www.johnkingchains.com

CAST DETACHABLE CHAINS

BRITISH PATTERN ATTACHMENTS



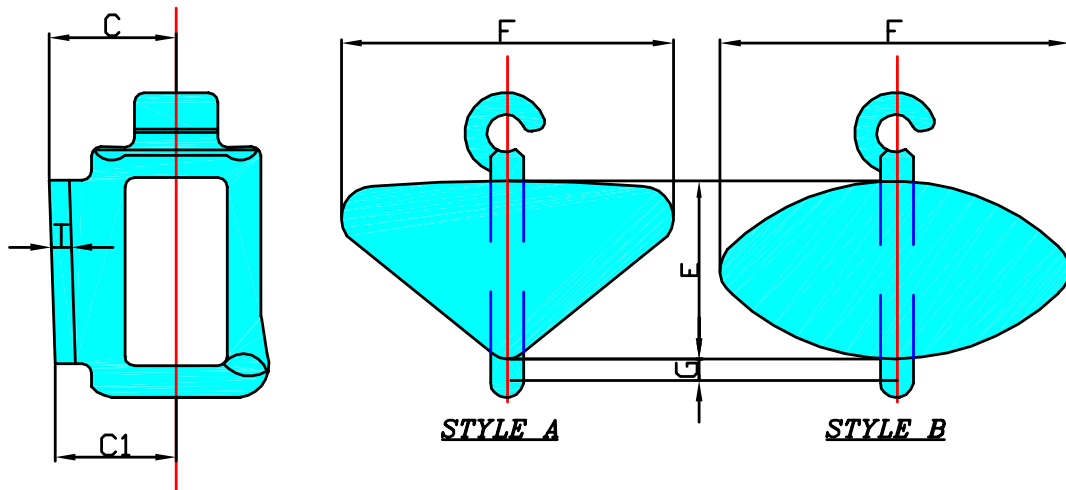
TYPE K1

CHAIN N°	A		B		C		φD		E		F		T	
	in	mm	in	mm	in	mm	in	mm	in	mm	in	mm	in	mm
42	2 ³ / ₁₆	55	11 ¹ / ₁₆	17	3 ³ / ₈	10	3 ³ / ₁₆ ○	5	3 ³ / ₄	19	3 ³ / ₁₆	80	5 ⁵ / ₃₂	3
45	2	51	3 ³ / ₄	19	3 ³ / ₈	10	3 ³ / ₁₆ ○	5	7 ⁷ / ₈	22	2 ¹³ / ₁₆	71	1 ¹ / ₈	4
48	2 ⁷ / ₁₆	62	1 ¹ / ₁₆	27	9 ⁹ / ₁₆	14	5 ⁵ / ₁₆ ○	8	1 ¹ / ₈	28	3 ³ / ₈	86	1 ¹ / ₈	4
57	3 ¹ / ₁₆	78	1 ¹ / ₈	29	9 ⁹ / ₁₆	14	3 ³ / ₈	10	1 ¹ / ₄	32	4 ¹ / ₈	105	5 ⁵ / ₃₂	5
63	3 ⁵ / ₈	92	1 ¹ / ₂	38	3 ³ / ₄	20	3 ³ / ₈	10	1 ¹ / ₂	38	4 ⁷ / ₈	124	7 ⁷ / ₃₂	7
101	5 ¹ / ₈	130	1 ⁷ / ₈	48	1	25	1 ¹ / ₂	13	2	50	7 ¹ / ₈	181	1 ¹ / ₄	4



CAST DETACHABLE CHAINS

BRITISH PATTERN ATTACHMENTS



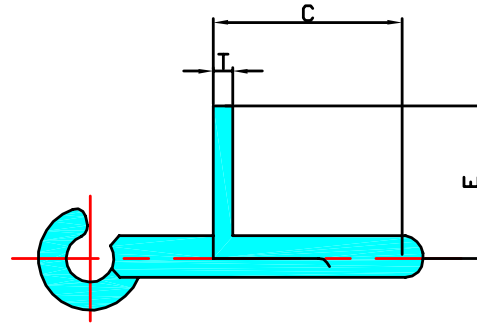
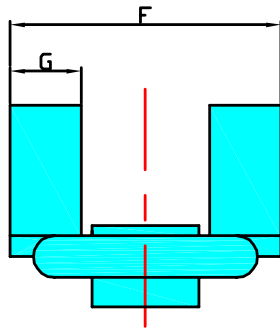
TYPE G1

CHAIN N°	STYLE	C		C1		E		F		G		T	
		in	mm	in	mm	in	mm	in	mm	in	mm	in	mm
57	A	1 ³ / ₈	35	1 ⁵ / ₁₆	33	1 ⁹ / ₁₆	40	2 ³ / ₄	70	ON CL	ON CL	5/ ₁₆	4
63	B	1 ⁹ / ₁₆	40	1 ⁹ / ₁₆	40	1 ⁷ / ₈	48	3 ¹ / ₁₆	78	5/ ₈	16	5/ ₃₂	4
88	B	1 ⁷ / ₈	47	1 ⁷ / ₈	47	1 ⁷ / ₈	47	3 ⁹ / ₁₆	90	3/ ₈	10	1/ ₄	7



CAST DETACHABLE CHAINS

BRITISH PATTERN ATTACHMENTS



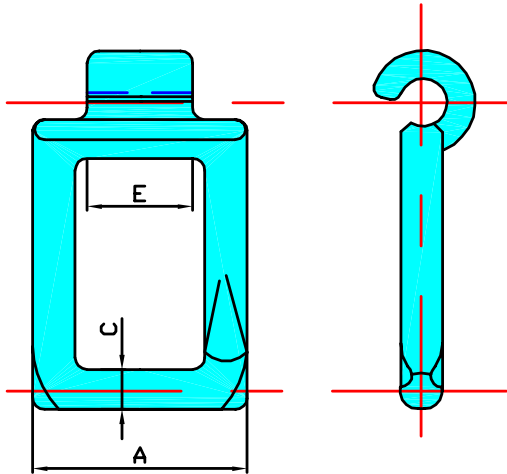
TYPE F1

CHAIN N ^o	C		E		F		G		T	
	in	mm	in	mm	in	mm	in	mm	in	mm
55	1 ³ / ₁₆	30	1 ³ / ₁₆	30	2 ⁹ / ₁₆	65	1 ³ / ₁₆	21	5/ ₃₂	4
57	1 ⁵ / ₈	41	1 ⁹ / ₁₆	40	3	76	1 ⁵ / ₁₆	24	5/ ₃₂	4

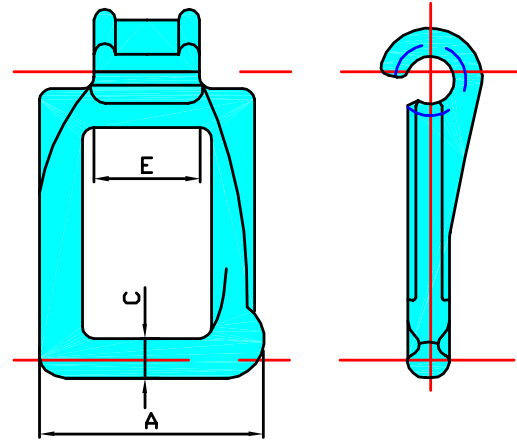


CAST DETACHABLE CHAINS

AMERICAN PATTERN



STYLE A



STYLE B

CHAIN N°	STYLE	PITCH	WIDTH A	DIAMETER OF CROSSBAR C	MAXIMUM SPROCKET FACE E	No OF LINKS IN 10ft	AVERAGE ULTIMARE STRENGTH lb	AVERAGE NET WEIGHT lb/ft
A32	A	1.154	29/32	11/64	1/2	104	1100	0.32
A42	A	1.375	19/32	7/32	5/8	88	1600	0.55
A45	A	1.630	1/4	7/32	11/16	74	1700	0.52
A48	A	2.000	1/2	7/32	19/16	60	1600	0.53
A51	A	1.155	19/32	11/64	9/16	104	1900	0.70
A52	A	1.506	115/32	11/64	5/8	80	2300	0.80
A55	A	1.631	119/64	11/64	11/16	74	2300	0.70
A57	A	2.308	135/64	11/64	3/4	52	2900	0.87
A62	A	1.654	111/16	5/16	19/16	73	3200	1.04
A67	B	2.308	161/64	5/16	11/16	52	3400	1.15
A77	B	2.297	23/16	25/64	11/16	52	3600	1.45
A78	B	2.609	29/16	27/64	15/16	46	5500	1.86
A88	B	2.609	223/32	31/64	15/16	46	6400	2.30
A103	B	3.075	3/4	37/64	1/8	39	10000	4.00
A114	B	3.250	37/16	21/32	1/8	37	12000	5.25



(UK) John King Chains Limited.
 New Climax Works, Lancaster Way, Sherburn in Elmet LS25 6NS UK
 Telephone: (44) 01977 681910 Facsimile: (44) 01977 681899
 E-mail: admin@johnking-chain.com
 technical@johnking-chain.com
 sales@johnking-chain.com

John King (USA) Inc.
 200 Catherine Street, Unit 7B, E. Peoria IL61611 USA
 Telephone: 309-698-9250 Facsimile: 309-698-9259
 E-mail: salesusa@johnking-chain.com

Web: www.johnkingchains.com